



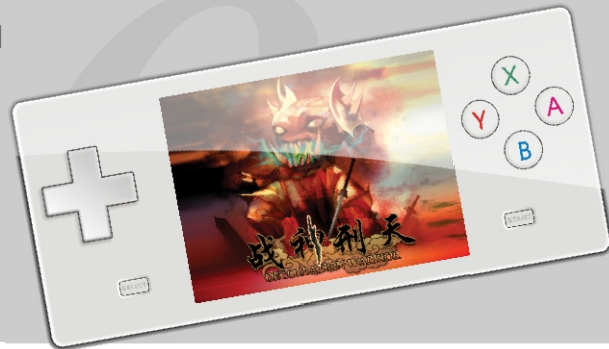
丁果数码
DINGOO DIGITAL



[Http://www.dingoo888.com](http://www.dingoo888.com)

DINGOO DIGITAL PRODUCTS CO.,LTD
Room 1109, Tower A Xinian Center, No. 6021, Shennan Rd,
Futian District, ShenZhen, PR, China.
Tel: (86)755-88309090 Fax: (86)755-88309080

User Manual



A-320

Digital Multimedia Player

Contents

Dear Customers
Thank you for choosing Dingoo Digital's Product.
This is the product user manual, to ensure you can use
our product efficiently please read this manual carefully.

Product standard: Q/GM 2

Detailed instruction (A-320) is also available on the website below:
<http://www.dingoo888.com>

Safety

Safety & usage	1
Earphone usage	1
Battery & power usage	1

Console Main Function

Console main function	2
-----------------------------	---

Accessories Package

Accessories Package	3
---------------------------	---

Main Console Key and Function Layout

Front/back	4
Side /bottom side	5
Quick Key & Function Guide	6

Basic Function

Display indication	7
Power recharge	7
Turn on /off	8
Key lock function	8

Game Function

Game functions	9
----------------------	---

Music Player

Music Player functions	10-12
Synchronize lyrics display	12

Movie Player

Movie player functions	13
------------------------------	----

FM Radio

FM radio function	14-15
-------------------------	-------

Recorder

Record function	16
-----------------------	----

Image

Image function	17
----------------------	----

E-book

E-book function	18-19
-----------------------	-------

Connect to TV

Connect to TV operation	20
-------------------------------	----

Browse all files

Browse all files	21
Delete files	21

Setting

About the player	22
Theme selection	22
Display	22
Screen power saving time	22
Auto shut down	23
Language	23
Speaker on/off	23
Hard drive anti-virus function	23
Reset to factory setting	23

Contents

Connect to computer & Hardware upgrade

Connect to computer	24
Hardware upgrade	24

Use of MINI SD card

MINI SD card plug in and unplug	25
Use of MINI SD card	25

Formatting Player

Formatting folder / disk	26-27
--------------------------------	-------

Product details

Product details	28
-----------------------	----

Frequent Ask Questions

Frequent Ask Questions	29-30
------------------------------	-------

Safety

Safety & Usage

- Please do not store and use this console in high humid, high temperature and high magnetic area. Please be aware when using in swimming pool, bathroom, kitchen etc.. area and environment.
- Please secure and store your console properly, especially when you are running or doing any exercises. Any dropping of console might damage the console and/or affect the console sound quality. Any dropping damage is not included in warranty.
- When using the USB Cable please make sure the connection with computer is correct. If the connection is incorrect, it might cause error or damage to the console and/or computer.
- When the console and the computer are connected and transferring the data, please do not disconnect it. Otherwise it may cause data error or losing, also might cause console system error.
- Please turn off the console before unplugging any SD/ MMC card in order to prevent damaging the card.
- Before disconnect the console and the computer or unplugging the USB Cable from the computer and/or console, please make sure you clicked the USB icon, which located on your right bottom corner of the desktop, to disconnect the console link to your computer system, in order to prevent any error or damage to the console/computer system.

Usage

- Please do not use this console when you are driving or doing any work that needs high concentration.
- When you are walking or in a danger place (such as highway or construction site etc..) please be aware and turn off your console and/or your earphone.
- Please does not turn the Audio/sound volume to the highest all the time, to prevent any damage to your hearing.

Battery & Power Usage

- If the console is not in use, please unplug the power.
- When unplug the power adapter please make sure you are not unplug by pulling the power cable, in order to prevent any damage on power cable, which also might cause electronic shock.
- If your hand is wet, please do not touch the power adapter, in order to prevent electronic shock.

Console Main Function

- Games: Play games in (8 bit /16 bit /32 bit) GBA/3D formats and play more by upgrading the software.
- Outlook: Premium design fashionable, slim and portable size with comfortable hand grip.
- AV-OUT: AV-OUT technology ensure you enjoy a lot of hit-film as well as playing games.
- Video Player: Video function supports various formats such as RMVB, RM, AVI, WMV, FLV, MPEG, DAT, MP4, ASF and helps users encode video files in an easy and convenient way.
- MP3 player: Audio function supports MP3, WMA, APE, FLAC audio format, synchronous lyrics display function, multi equalizer options, surround sound effect and play mode options. Music can keep playing while using other application.
- FM Radio: Wide channel ranges from 76.0MHz ~ 108.0 MHz, support manual/auto channel scanning, FM recording and can keep playing while using other application. User can save up to 40 channels.
- Digital Recorder: Voice recording and supports MP3/WAV formats.
- Image Browser: Image browsing format includes JPG, BMP, GIF, PNG, with zoom, rotate and image slide show function.
- E-book: feature function includes bookmark, auto browsing, font sizing, TTS oral reading etc.
- U-Disk virus protection: built-in anti-virus software protect and keep the system at its best performance.
- USB 2.0 Transmission Interface
- Support WIN2000/XP/VISTA/MAC Operation System.

Accessories Package



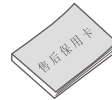
Earphone



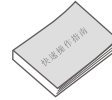
USB Cable



AV Cable



Warranty card
(for console only)

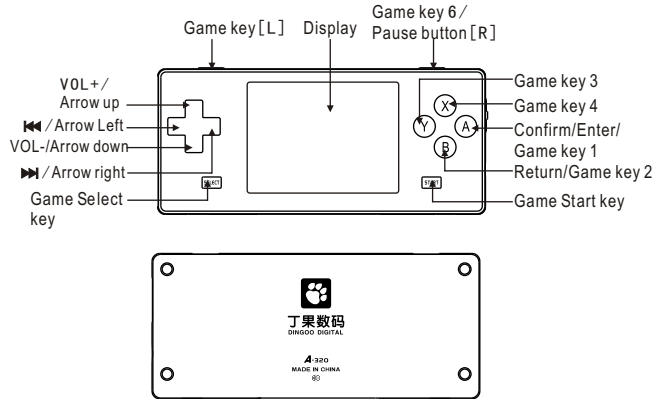


User Manual

- As all of the accessories are included as free items, so no warranty is included. All accessories cannot be exchange and refund. Any changes are subject to individual product package, and will not be informed individually.

Main Console key and function layout

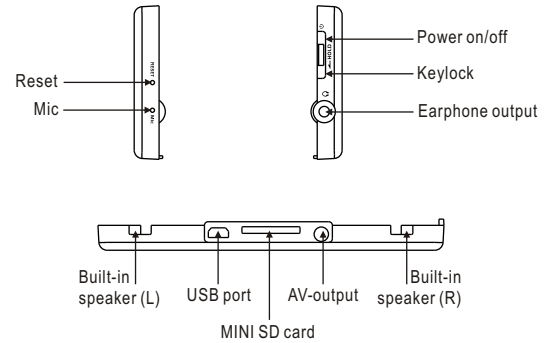
Front/ Back



Main Console key and function layout

Side /bottom

Side /bottom



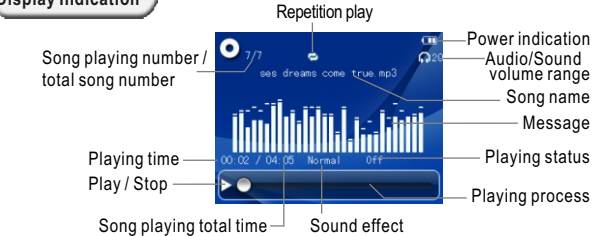
Main Console key and function layout

Basic Function

Quick Key Function

- L+ START press together: Press when you are playing games, video player will convert to TV-OUT mode.
- SELECT + START press together: press when you are playing the game, game main menu display.
- POWER + [up] key press together: press when you are playing the game, increase the audio volume.
- POWER + [down] key press together: press when you are playing the game, decrease the audio volume.
- POWER + [Left] key press together: press when you are playing the game, save the file.
- POWER + [Right] key press together: press when you are playing the game, loading the file.
- [R] key: Press this key to pause when MP3 is playing in any mode except game mode.
- POWER key: When playing game press [power] key exit from main menu. For TV-OUT mode, press [power] key to exit TV-OUT mode.
- START key: In music menu press this key to save file into the folder: In browser menu press this key to enter the main menu. For TV-OUT mode, press this key to exit from TV-OUT mode.
- SELECT key: In E-book mode, press this start to enter e-book main menu.
- START + SELECT key: When playing game, press this key can return to game function menu.
- [Up]/[down] key: When listening to MP3 and FM radio, press this key to increase/ decrease the audio volume.
- X key:
 - Except the game mode, for all other modes, holding this key can back to turn the main menu display.
 - In Music mode press this key to AB repeated playing function.
 - When browsing *.jpg image file, press [X] key to enlarge the image, press [B] key to return the image to the original size.
- A key: In movie mode, press this key to adjust the screen display size.

Display Indication



- Battery is full of power. When the battery being used for a while, power indication will drop.
- Battery is out of power/ nearly no power. You will see the power indication is in white color (empty), at that time please recharge the battery.

Power Recharge

- This USB cable not only can be used to connect with computer for transferring data, but also can be used to recharge the console. Please be aware that the console will be over-heated when recharging.
- Please make sure you disconnect the USB link between the console and the computer system after charging.
- Adaptor: You can use adaptor to recharge the console battery. It can be speed up by using both USB cable and adaptor.
- When recharging the console with USB cable, you can charge it while working after safely exit from the desktop.

Basic Function

Turn on /off

- To turn on the console, push the Power on/off key up and hold for a few seconds until the main menu appears on the display.



- To turn off the console, push the power on/off key up and hold for a few seconds, then it will turn off automatically.
- If you set the timer after you turn on the console, such as (10/30/1 hour), the console will turn off automatically when reaches the set time. Set up the "turn on/turn off" means automatic turn on/off function / Timer is on.

Key lock function

- When the "key lock" function is on, all keys cannot be functioned.
- To turn off the "key lock" function, hold "HOLD" key down for a few seconds.
- To turn on the "key lock" function, hold "HOLD" key up for a few seconds.

Game Function

- Push the Power on/off up and hold for a few seconds until the main menu appears on the display. On the main menu, press [▲] or [▼] to select 3D game; then Press [A] to enter the sub menu, as shown in the "Game menu" diagram below.



- Press [▲] or [▼] menu to select the classical game, press [A] to confirm selection. Select GBA game, show up "cart car", "devil city", "Street fighter" etc. Press [A] again to enter Game option.
- Game Menu: During the game, press [▶] will pop up game menu for your option.
- Start/ Return to the Game: When you exit from the Game Menu, your game will stay in Pause mode, Press "Start" or "Return" to continue.



- If you want to go back to saved game, press "Return" in the Game menu.
- Save Game: Select "Instant Save" in the game menu. Game can be saved at that moment. All game can save its progress.
- Audio On/Off: Select ON/OFF in the Audio on/off under Game Menu
- Playing the game: Press A, B button as main function key in Game. Navigate with Up, Down, Left, Right keys.
- Exit: Press "Exit Game" in Game menu to exit from game mode.
- Please be patient when you are opening same games with more data volume.

Music Player Function

- Push the Power on/off up and hold for a few seconds until the main menu appears on the display. Press [◀] or [▶] to choose Music, press (+) or (-) key to select playing music, song search, all song library, play list, folder, collection, artist, song title, music set up, renew song list 10 functions in total on the music main menu.



- On the music main menu select "music playing", press [A] key to enter to music selection menu, Press (A) key again to enter music/song playing display.
- On the music main menu select "all songs", press [A] key to enter to music selection menu, Press [▲] or [▼] to select songs and press [A] to confirm selected song.
- Press [◀] or [▶] to jump to the previous or next sounds.
- Press [◀] or [▶] to select songs.
- Press and hold [◀] or [▶] to REW (rewind) or FF (fast forward).
- Press [R] to pause or resume playing.
- Press [▲] or [▼] to increase or decrease the volume.
- Press [Y] to switch speaker On/Off, hold and press [X] to resume AB repeated function.
- Press [B] to return to music menu, hold and press [X] go back to main menu.
- On music main menu select "collection", Press [A] key to enter the music selection menu display, press [▲] or [▼] key to select the song, press [A] key to play the selected music/song.
- On music main menu select "artists", Press [A] key to enter the music selection menu display, press [▲] or [▼] key to select the song, press [A] key to play the selected music/song.
- On music main menu select "title", Press [A] key to enter the music selection menu display, press [▲] or [▼] key to select the song, press [A] key to play the selected music/song.

Music Player Function

- On music main menu select "play list", Press [A] key to enter the music selection menu display, press [▲] or [▼] key to enter folder selection menu, select folder then press [A] key to enter the music selection menu.
- On music main menu select "folder", Press [A] key to enter the music selection menu display, press [▲] or [▼] key to enter folder selection menu, then press [A] key to play or delete selected song.
- In "music set up" select "play mode", then press [A] key to enter menu to select: Repeat all, normal, shuffle mode, repeat track, play track 5 selections in total, press [] or [▲] key to select menu, press [A] key to save the set up.
- In "music set up" select "3D sound effect", press [A] key to enter select menu, then press [▲] or [▼] key to select "Audio input set up", this menu includes: normal earphone, Real earphone, normal Hi-Fi, large Hi-Fi, press [▲] or [▼] key to enter selection menu, press [A] save selected set up.
- In "music set up" select "3D sound effect", press [A] key to enter select menu, then press [▲] or [▼] key to enter selection menu, press [A] save selected set up.
- In "music set up" select "3D sound effect", press [A] key to enter select menu, then press [▲] or [▼] key to select "automatic audio balance", press [A] to turn on or turn off.
- In "music set up" select "3D sound effect", press [A] key to enter select menu, then press [▲] or [▼] key to select "bass", this menu includes: turn off, normal, middle, strong, press [A] to save selection.
- In "music set up" select "3D sound effect", press [A] key to enter select menu, then press [▲] or [▼] key to select "High frequency", this menu includes: turn off, normal, middle, strong, press [A] to save selection.
- In "music set up" select "equalizer", press [A] key to enter select menu, then press [▲] or [▼] key to select "High frequency", this menu includes 9 options: normal, Jazz, Prevail, Rock, Classic, Human voice, Vocal, bass, customize set up. Then press (up) or (down) key to select "automatic audio balance", press [A] to save selection.
- In "music set up" select "virtual sound field", and press [A] to enter. This menu includes 6 options: turn off, music, small house, big house, scene and stadium. Then press [▲] or [▼] key to select options in the list, and press [A] to save your selection.

Music Player Function

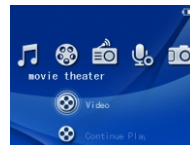
- In "music set up" select "Background music playing mode", press [A] key to turn on or off the background music function. Music player can function with other applications such as e-book and image browser. While playing MP3 or listening radio as background application, press and hold [▲] or [▼] keys to adjust volume.
Operate: While music is playing, press [A] key for a few seconds to back to main menu, press [◀] or [▶] key to select "animation" or "e-book" then press [A] key to confirm.
- In Music main menu select "Renew song message", press [A] key to renew the song message, this function is to update/renew all songs to 'all song folder' menu.

Synchronize lyrics display

- This console supports "x.LRC" lyrics file (User can go to "My favorite songs" to download), after adding those lyrics, you can enjoy music and lyrics at the same time.
- How to use lyrics file?
Name the lyrics file the same as the music /song file.
For example:
Music / song file name is: Jacket-song.mp3
Lyrics file name is: Jacket-song.lrc
- If both music and lyrics file names are the same, the console will automatically display the lyrics when the music with the same name is playing.

Movie Player Function

- In the main menu select "Movie Player", this menu includes 3 options: video, play by chapter and video set up. this display screen is the same as this photo below:



- when you play a file, you can press [◀] or [▶] key to select confirm/cancel function.
- When the Video is playing, press and hold [◀] or [▶] to REW (rewind) or FF (fast forward).
- When the Video is playing, press [R] to pause or resume playing.
- When the Video is playing, press [▲] or [▼] to increase or decrease the volume.
- When the Video is playing, press [L+START] key to switch to TV-OUT function.
- In video menu, Press [◀] key back to menu, press [▶] key to go to next menu.
- In video set up select "Video Time", press [A] key to turn on or off the video time display. If "Video Time" function is on, you will see video playing time on the right of the display which has playing time and total playing time. If "Video Time" function is off, you will not see the video playing time or the total playing time on the display.
- In video set up select "playing video by chapter", press [A] key to turn on or off this function. When "playing video by chapter" function is on, the "playing video by chapter" menu will pop-up when you play a file, you can press [◀] or [▶] key to select confirm/cancel, please select your option and confirm, press [A] key to exit then the video will play at the beginning of that chapter. If this function is off, the video will play from the very beginning.
- In video set up select "display mode" press [A] key to enter display mode set up, press [▲] or [▼] key to select display mode, which includes normal, partial, full screen, press [A] key to confirm to your selection.
- Press and hold [X] to go back to main menu.

FM Radio Function

- In main menu select "radio", press [▲] or [▼] to select "radio" on the menu, which includes 4 options: radio, school channel, record channel, radio set up, as photo below:



- Select "Listen to Radio" in the Menu. The list of channels will show on the display, press [◀◀] or [▶▶] key to switch to previous or next channel.
- Select "Channel list" in the menu, press [A] to listen to the selected channel, press [A] again to enter "manual tuner" menu. To tune channel, press [◀] or [▶], press [A] again to save channel setting.
- Press [▲] or [▼] to adjust the volume, when the radio is on.
- Press and hold [X] to return to Main Menu, when the radio is on.
- Select "channel menu", press [A] to display all saved channel number, channel frequency, press [▲] or [▼] to select the channel you want from the menu, then press [A] key to confirm selected channel then you will listen to your selected radio channel.
- Select "Renew channel menu", press [A] key to search radio channel manually, press [◀] or [▶] key to adjust the channel frequency.
- Select "Renew channel menu" press [A] key to do channel auto search, then the searched channel will be saved in the "channel menu" automatically. The renew/updated channel frequency will be stored in "internal listing".
- Select "Background music playing mode", press [A] key to turn on or off the background music function. When "Background music playing mode" function is on, the console can apply a few different functions at the same time. Radio player can function with other application such as e-book and image browser
- Select "channel selection menu", Press [A] to switch to "internal listing" or "external listing". "Internal listing" means the list is automatically updated by "renew channel menu" function. "external listing" means the users can edit and match Fm.ini channel file with the pre-set local FM radio frequency.

FM Radio Function

Fm.ini file is compliable for in windows "Notepad" function and can be edited in window, format as below:

```
[FM]
CH01=0087600 Beijing culture radio channel
CH02=088000, Guangzhou flying 88 channel
Indication: [FM]: this mark must save as it is cannot make any changes.
           CH01: CH add number
           = : must save with this mark
           087600 : means 87.6MHz
           , : must save as ascii's ", , cannot use Chinese ", "
```

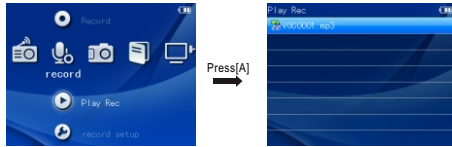
- Others: radio channel file name must be within 16 English Letters or 8 Chinese characters
- Select "signal strong / weak set up", press (A) key to adjust the signal strength.
- Select "radio searching area" press [A] key to enter set up, press [▲] or [▼] key to select China, Europe, America, Japan total 4 radio searching areas. This console per-set "China" as "radio searching area".
- Fm.ini file need to copy to radio player main menu.
- To ensure you a better effect, we suggest you to use earphone when listening to radio, it is because the earphone could be used as a receiver .
- Press and hold [X] to return to Main Menu, then press [▲] or [▼] key to select "record channel" now, press [A] key to enter recorder main menu, then press [A] key again to enter record menu display.
- When you exit, the file will be saved automatically.

Recorder Function

- In main menu select "Recorder", press [A] key to enter the sub-menu display, as photo below:



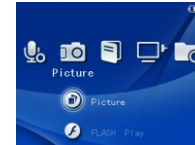
- Select "Record" in the main menu, press [A] to enter the recorder menu, press [A] again to start recording. If you exit from the recorder, the recording / recorded file will be saved automatically.
- Select "Play recording" to enter the recorded track list by pressing [A]. Press [A] again to play the selected track, as photo below:



- For the instruction of the playing recorded track please refer to play mode in the music player instruction in user manual.
- Select "recording setting" press [A] to enter the recording setting menu, then press [A] again to enter recording quality menu. Press [▲] or [▼] to adjust low, medium, high 3 different types of recording quality.

Image Function

- In main menu select "image", this menu includes 2 options: image browser, flash player.



- Image
 - In the thumbnail image, press [◀][▶][▲] or [▼] to select image, press [A] to browse image.
 - When browsing image, press [◀] or [▶] to switch to previous/ next file.
 - In the Browsing mode, press [A] and select "Start slideshow" option to start playing slideshow.
 - In the Browsing mode, press [A] and select "time interval of each slide" to choose the play time between each image.
 - Time setting interface: time setting includes 2, 3, 5, 8, 15 seconds.
 - In the Browsing mode, press [A] then press [▲] or [▼] to select the image as background image for music player, radio, recorder, e-book mode. Press [A] again to save setting.
 - In the Browsing mode, press [A] then press [▲] or [▼] to select the image as background image for Main Menu. Press [A] again to save setting.
 - In the Browsing mode, press and hold [X] to go back to Main Menu.
- Flash Player
 - In the flash file list, press [▲] or [▼] to select flash file and press [A] to play. Press [B] to go back to previous menu.
 - When playing flash file, press [◀] or [▶] to play previous or next file.
 - When playing flash file, press [R] to pause and press again to resume playing.
 - When playing flash file, press [▲] or [▼] to adjust the volume.

E-book Function

- In main menu select "e-book", press [A] key to enter e-book menu, press [▲] or [▼] key to select e-book file, then press [A] key again to enter e-book selection menu, as below:



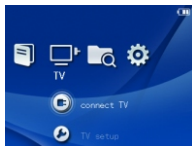
- In e-book selection menu, press [A] key to enter set up menu, select oral reading, and then press [A] key again to either turn on or off this function.
- In e-book selection menu, press [A] key to enter, select page reading, then press [A] key again, then input page number and you can read that page.
- In e-book selection menu, press [A] key to enter set up menu, select book mark, then press [A] key again to enter book mark menu, press [▲] or [▼] key to book mark choice, press [A] to confirm, and it can save 4 book marks in maximum.
Note: Book mark function only available for reading file, if you exit from the file, the book mark must be re-set.
- In e-book selection menu, press [A] key to enter set up menu, select "automatic browsing," then press [A] to set the automatic browsing, time, then press [A] again to start auto browsing function.
- In e-book selection menu, press [A] key to enter set up menu, select "automatic page change", then press [A] again to set the automatic page change time.
- In e-book selection menu, press [A] key to enter set up menu, select e-book fonts, then press [A] to enter menu., then press [▲] or [▼] to select the options, and press [A] key to confirm / save setting.
- In e-book selection menu, press [A] key to enter set up menu, select fonts color, then press [A] to select 15 options in total: black, blue, green, white, red, purple, gray, light blue, dark red, dark purple, dark yellow, Navy, dark green, blue white colors. Press [▲] or [▼] to select your option and press [A] to confirm or save your option.

E-book Function

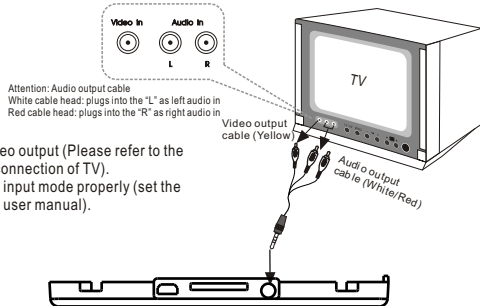
- In e-book reading, press [STRAT] to start oral reading function, and press [SELECT] to read according to your option.
- In e-book selection menu, press [A] key to enter set up menu, select background color, then press [A] to select 7 options in total from menu, green, yellow, purple, gray, black, white and blue. Press [▲] or [▼] to select setting, press [A] to save your options.
- In e-book browser, press [▲] or [▼] to select the reading upper line or bottom line, press [◀] or [▶] to read pervious page /next page.
- In e-book browser, hold [X] key for a while to go back to main menu.

Connect to TV

- Select "TV mode" in the main menu.



- In the TV main menu, press [▲] or [▼] to enter the TV setting, press [A] to enter TV signal system selection menu, press [A] again then switch [PAL] or [NTSC]
- In TV sub menu, press [up] or [down] to select "TV screen setting", press [A] to switch between "16:9" and "4:3".
- The following diagram shows the connection between the player and TV. After connected, press [▲] or [▼] in the TV menu and select "connect to TV" and press [A] again to view the clips on TV.



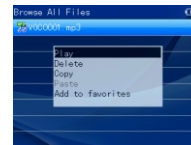
- 1 Connect audio and video output (Please refer to the TV instruction for the connection of TV).
- 2 Turn on the TV and set input mode properly (set the AV mode or refer to TV user manual).

Browse all files

- In main menu select "Browser", press [A] key to select folder (U disk / MINI SD Card), press [A] to see all saved file , select the file then press [A] to play, as below:



- Delete file: In the Folder, press [▲] or [▼] to select the file you would like to delete, press [A] key to enter "play/delete" file, press [▲] or [▼] to select "delete", then press [A] key to confirm the deletion.



- Press [A] to copy and paste and it comes the menu options, and then press SELECT button to paste the file.

Note: To easier view in the browser, please copy the selected file in Folder.

Setting

- In main menu select "System set", press [A] key to enter system menu, then press [A] key again to enter system setup selection menu, as below:



- About the player
To select "About Player" in the setting option menu, press [A] to enter option menu and see the hard disc capacity, available capacity and version information.
- Theme selection
To select "Theme" in the option menu, press [A] to enter the option menu, press [▲] or [▼] to select option setting and press [A] again to save the option setting.
- Display
There are 3 options under this sub menu: Background light contrast, Font color and Reset to preset background. Press [▲] or [▼] to enter setting menu, press [A] to enter the sub menu. Inside each menu press [▲] or [▼] to selection setting and press [A] to save your selection. Background light contrast: Grade 01-05, the higher the grade. the brighter the contrast is. Font color: White, Red, Deep red, Green, Deep green, Blue, Navy, Light blue, Violet, Purple, Deep purple, Yellow, Deep Yellow, grey and Black (15 colors). Reset to preset background: reset all background to preset image/color.
- Screen power saving time
To select "screen power saving time" under setting menu, press [A] to enter menu list, press [▲] or [▼] to select time in the menu (5s, 10s, 15s, 20s, 30s or keep turning on), press [A] to save setting.

Setting

- Shut down
To select automatic shut down in the setting menu. Press [A] to enter option menu, press [▼] or [] to select time in the menu (10min, 30min, 1 hour, shut down), press [A] to save setting. The timer will start the countdown when no function is operating and no key is pressed. The player will shut down automatically when the countdown is finished. This function is specially designed for listening to music before sleep or using recording option.
- Language
To select "language" in the option menu, press [A] to enter the menu, press [▲] or [▼] to select language from the menu (Simplify Chinese, Traditional Chinese and English), press [A] to save setting.
- Speaker on/off
To select " U-disk anti-virus function" in the menu, press [A] to turn on/off.
- U-disk anti-virus function
To select "Hard drive anti virus function" in the menu, press [a] to turn on/off
- Reset to factory setting
To select "Reset to factory setting" in the menu, press [A] to exit from the selection menu, press [◀] or [▶] to confirm or cancel then press [A] again to confirm and save setting.

Connect to computer & Hardware upgrade

Connect to computer

- The console supports Windows 98 (need to install driver), Windows 2000 or above (do not need to install driver), Mac OS 10.3 or above, Linux Redhat 8.0 and above.
- To connect the console and computer, use the USB cable provided in the box.
- After you connect the console and computer by using the USB Cable, a new icon will come out which shows your player.
- On Windows desktop double click "my computer", you will see a new driver /hardware which is your player.
- To copy the file from the computer to the console, you can simply copy the file and paste the file on the console hard disk.

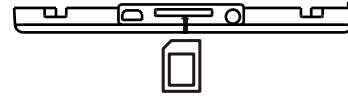
Note: when exchanging date between MP3 and computer , please do not disconnected the USB cable, otherwise system error or file damage will occur.

Hardware upgrade

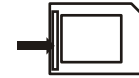
- Please ensure the battery has enough power when upgrading. (Require more 2/3 of battery), otherwise upgrade might not be successful.
- Please download the upgraded pack from the Dingoo website.
- Copy the upgraded file A320.HXF in the player, and unplug USB safely.
- Un-plug USB cable, turn off player firstly, then hold [HOLD] key up as well as the [VOL-] key until the screen shows "Firmware Upgraded..... Do not power off" then release the [vol-] and [HLOD] keys, player will upgrade automatically.
- Please make sure safely disconnected with computer by click the icon at the right bottom of your computer before you unplug the USB cable from computer, otherwise it might cause system error or locked.
- After the firmware upgrade, it's better to reset it to ensure it works well.

Use of MINI SD card

- Put the MINI SD card into the machine



- If you want to pull out the MINI SD card, please make sure the card is not loading/using. Then use your finger to press the MINI SD card once, then the it will slide out automatically.
- If the card does not slide out, hold the gap on the card as photo shows below and pull out from the MINI SD card port directly.



- Formatting: Please use this machine to format the MINI SD card, so that all files are in FAT32 format, which this system fully supports.
Note: please turn off your machine before pulling out the MINI SD card, in order to prevent files damage, data loss or any system error .

Formatting Player

● Formatting folder / disk

If the player cannot read or write, please use Windows formatting tools to format the disk, then the console should be able to read or write the files. Usually choosing quick format functions will just delete all files in the folder /disk.

● Start formatting

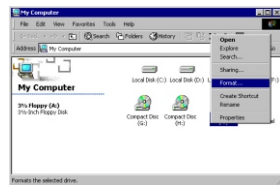
- 1) Install supporting software.
- 2) Connect the console to the computer.

● Step

1 Connect the console to computer, and then go to my computer.



2 Select the console drive/disk, then click and select [Formatting].

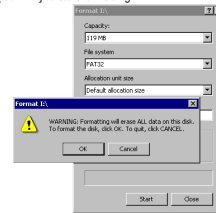


Formatting Player

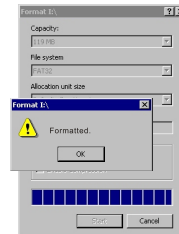
3 Then click [Start].



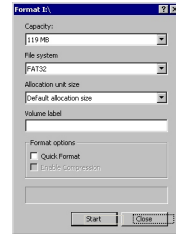
4 Then "Warning" pop up window appears, please click [Confirm] to start formatting.



5 When formatting complete, please click [confirm].



6 The Click [Close] to exit from formatting function.



The operation to format the player is the same as that of the WINDOWS's disk. Please backup the important information. It is not available once formatted.

Product details

Items	Details
Voice Format	Support RM / RMVB / MP4 / 3GP / AVI / ASF / MOV / MPE / DAT / FLV / MPEG / MPG format
Music Format	Support MP3 / WMA / APE / FLAC/RA etc..fo rmat
Picture Format	Support JPG/GIF/PNG/BMP etc..fo rmat
Sound system	Normal / Jazz/ Prevail / Rock / Classic / Vocal / Bass
Broadcast mode	Multi broadcast model : Shuffle, Shuffle Repeat/ Normal/ Repeat track / Repeat all
LCD	3 inch color LCD, 1600 million color (320 x 240 pixels)
Recorder	MP3 record function
Remove storing function	Removable hard discs.
PC connection	USB 2. 0 (H igh speed)
Software	Quick and convenient player management software.
Supported software system	Windows 98 / 2000 / XP (Win2000/XP or above)
THD	≤3%
Max output frequency	≥10mW×2

- Any changes in specifications or technology will not be informed.

Frequent Ask Questions

Functional Questions

- Cannot turn on the machine
(a) Battery may be out of power. Please recharge the battery and it will turned on.
(b) If it is a program error, press "RESET" button.
- Turn off suddenly when using
(a) Battery may be short for power. See the power indicator on the screen.
(b) Once you set the Turn off timer in a short time, if you do not run the player or press any key, the console will be off automatically.
- Screen turning dark in a short period of time
Please check if the power saving mode is "ON" for a short timing setting. You can extend the power saving time to prevent screen turning dark suddenly.

File Upload , Download Questions

- Why my computer cannot identify the console?
Please check if the console is on yet, is display on main menu or any error with the computer USB plug (any error or short for battery.)
It might cause by the computer operation system error, so please reset the computer and the console or there might be a failure in the drive.
- Why my computer cannot connect to the console?
This might because the USB cable is not fully connected, or the USB cable is not within 4,5V-5V electronic circuit. What's more, the length of the interface is different between power cable and data cable, as a result, data between computer and player can not be exchanged.
- Why my computer cannot connect to the console?
This might because the USB cable is not connected well, or the USB cable is not within 4,5V-5V electronic circuit. What's more, the length of the interface is different between power cable and data cable, as a result, data between computer and player can not be exchanged.

Frequent Ask Questions

- Why the nominal memory space is different from that shown on the screen?
The nominal memory space is 128M, however according to the difference between 1000 and 1024 calculation method, after formatting the memory space should be 125M.(Just like formatted software in 1.44M will turn to 1.38M) . The difference in memory space between PC and MP3 is that this space is used to store player software and GB Character Base.
- Cannot find saved files?
 - a)Data is saved in MINI SD card , and can be read by SD card firstly.
 - b)Data is not saved. Data transmission must be cutdown.
- The computer unable to identify the console hard disk after connection?
If you are using Windows 98 or lower Windows version, please install the driver and connect the console to computer again.
Please check if the USB cable and plug are connected probably.
- Why the console is locked?
While the data is transferring and formatting, if the connection is disconnected, it will cause console system error or locked. The transferring data speed should follow the console display speed, when the data display stop, which means data transmission completed. **Notes: Please make sure safely disconnected with the computer before you unplug the USB cable connection from the computer. Otherwise it might cause system error or locked.**
Note: Please do not disconnect the connection between the console and the computer, while the data is transferring or formatting.

Question about music playing

- Why downloaded WMA file cannot play?
Download WMA format file cannot play in this machine, because WMA file is copyright protected file You can make WMA by yourself. Please be aware not to choose copy right protection when you use WMP to make WMA.
- Why the movie player, music player cannot play?
Please check on the menu to make sure your selection is correct.