

# LEGAL NOTICES.

™ and © ‘Gizmondo’, the ‘Gizmondo’ device and ‘Smart Adds™’; are Trademarks of Gizmondo Europe Limited.  
 © 2005 Gizmondo Europe limited. All rights reserved. FOR NON COMMERCIAL PERSONAL USE ONLY.

The Bluetooth™ word mark and logos are owned by the Bluetooth™ SIG, Inc. and any use of such marks by Gizmondo Europe Limited is under license. © 2005 Microsoft Corporation. All rights reserved. Microsoft, Windows, Windows Powered and the Windows Logo are either registered trademarks or trademarks of Microsoft Corporation in the United States and/or other countries.

The name NVIDIA™ and the NVIDIA™ logo are registered trade-marks of NVIDIA™ corporation. The name GoForce and the GoForce product logos are trademarks of NVIDIA™ corpora-tion.

Other trademarks and tradenames are those of their respective owners.

## HEALTH WARNING

Take a break of around 10-15 minutes for every hour you play, even if you feel that you don’t need it. Playing video games also carries the risk of such conditions as Carpal Tunnel Syndrome, tendonitis and skin irritation. If your hands, wrists or arms become tired or sore while playing, stop and rest for a few hours. If symptoms continue during or after play, stop and consult a doctor as soon as possible.

To avoid eyestrain, use your Gizmondo™ device in reasonably lit areas, and hold your console at a reasonable distance from your eyes. We also advise against playing when overly tired or suffering from a lack of sleep. Please note that playing video games or watching movies can lead to motion sickness, so if you experience any nausea or dizziness while playing, stop and take a rest. Do not drive, operate heavy machinery or engage in any similar mentally demanding activity until you are fully recovered.

## IMPORTANT

Playing video games or watching movies causes a very small number of people to experience ‘photosensitive epileptic seizures’, the result of flashing lights or patterns present in many games. You may even be at

risk even if you have never suffered symptoms before. If you or a close relative have a di-agnosed epileptic condition, consult your doctor before play-ing video games or watching movies. Similarly, if you experience any symptoms of epilepsy while playing, you should stop IMMEDIATELY and visit a doctor as soon as possible. Symptoms include any of the following: dizziness, altered vision, twitching in the eyes or face, other involuntary movement, loss of awareness of your surroundings, disorientation and convulsions.

## NOTICE TO PARENTS

Please go over this information with your children before they begin to use their Gizmondo™ devices. Make sure they are properly supervised when they are using their Gizmondo™ devices. Ensure they notify you if they feel symptoms described in the Health Warning notice of this document and take necessary action as outlined above. The Gizmondo™ device is not designed and is not suitable for those under 15.

## PIRACY NOTICE

We take piracy seriously: It damages legitimate developers, publishers and retailers alike. Furthermore, any unauthorized reproduction of all or any game part of the Gizmondo™ device or unaut-horised use of registered trademarks is likely to constitute a criminal offence. If you suspect any game product is an unauthorised copy, or you have any information about pirated Gizmondo™ device products, please get in touch with our helpline. Relevant contact details are located at the back of this manual.



## LEGAL NOTICES.

### HANDLING YOUR GAME MEDIA

While your Gizmondo™ device and supplied games should be reasonably hard-wearing, you should make sure you handle your game media with care, in order to get the most from your Gizmondo™ device.

- DON'T insert any Gizmondo™ game/media card into any device other than a Gizmondo™ device
- DON'T touch the metallic contact points any game/media card
- DON'T leave any game/media card in direct sunlight or near a radiator or similar heat source
- DON'T allow water or any other liquid to come into contact with any media card
- DO store your game/media card in the supplied packaging or similar protective case

### ELECTRIC SHOCK

**AVOID ELECTRIC SHOCK.** Use only the battery charger supplied with your Gizmondo™ device. Using any charger not supplied by Gizmondo™ will void your warranty. Do not use your charger if its connected wires become damaged or the wires become exposed. When disconnecting from the wall, pull from the plug casing: do not pull it out using the wires.

### RISK OF EXPLOSION.

There is danger of explosion if the battery is placed incorrectly or exposed to fire.

### AVOID LEAKAGE.

Do not short-circuit your battery. The battery does not have any user-serviceable parts, and you must NOT try to open the battery casing. Used batteries must be disposed of appropriately. We recommend you take the battery out if you're not going to use your Gizmondo™ device for an extended period of time.

### AUDIO WARNING

**Protect your hearing!** Prolonged exposure to excessive noise can lead to permanent loss of hearing. If you experience ringing in your ears turn your Gizmondo™ device volume down, or discontinue use. If symptoms persist, see a doctor.

**NEVER** use the Gizmondo device audio features, watch movies, play games, or use messaging functions whilst driving, cycling or operating machinery. It is dangerous, and in many territories, illegal.

### Smart Adds™

Smart Adds™ adhere to the relevant statutes and industry 'Codes of Practice'. In particular, these include the Data Protection Act and the codes covering mobile advertising. Any comments regarding advertising should be directed in the first instance to:

### Smart Adds™

Gizmondo Europe Limited  
 1 Meadow Gate Avenue  
 Farnborough Business Park  
 Farnborough  
 Hampshire  
 GU14 6FG  
 peter.lilley@tigertelematics.com  
 T: 01252 557 100



# INDEX

LEGAL NOTICES.....	1	5.3.3 Music Player Menu Items .....	20
INDEX .....	3	5.4.1 GIZMONDO™ DEVICE Camera Control Buttons.....	21
1.0 INTRODUCTION .....	6	5.4.2 My Pictures Controls.....	21
2.0 INSIDE YOUR GIZMONDO™ DEVICE BOX.....	7	5.4.4 Moving and Copying Images.....	22
2.1 When you open your Gizmondo™ device box:.....	7	5.4.3 Menu Items for My Pictures .....	22
2.2 Getting started: SIM card .....	7	5.4.5 Viewing Images.....	23
2.3 Getting started: Your battery and charger .....	7	5.4.7 Zoom Mode.....	23
2.4 I CAN...Gizmondo™ device Keys and Navigation .....	8	5.4.6 Controls when Viewing Pictures in full screen .....	23
2.5 Button and functions overview .....	9	5.4.8 Control Buttons for Zoom Function.....	23
2.6 Your Gizmondo™ device controls in detail.....	10	5.4.9 Renaming a Folder .....	24
2.7 Power Menu.....	11	5.4.10 Control Buttons for Renaming a Folder .....	24
3.0 REGISTERING YOUR GIZMONDO™ DEVICE .....	12	5.4.11 Saving a renamed folder .....	24
3.1 User Registration .....	12	5.5 Contacts.....	25
3.2 Personal Details.....	12	5.5.1 Control Buttons for Contacts .....	25
3.3 SIM PIN.....	12	5.5.2 Menu items for Contacts .....	25
3.4 Guardian Registration .....	13	5.6 I CAN SEND SMS AND PICTURE MESSAGING/MMS.....	26
4.0 THE GIZMONDO™ DEVICE INTERFACE.....	14	5.6.1 Control Buttons for Messaging.....	26
4.1 Status Indicators and Icons .....	14	5.6.2 Menu items for Messaging .....	26
5.0 GIZMONDO™ DEVICE APPLICATIONS.....	16	5.6.3 SMS.....	27
5.1 I CAN PLAY Games .....	16	5.6.4 Composing an SMS Message .....	27
5.2 I CAN WATCH MOVIES.....	17	5.6.5 Button Control for New SMS.....	27
5.2.1 Movie Player Keypad Functionality .....	17	5.6.6 Menu Items for New SMS.....	27
5.2.2 Control Buttons For Movie Player.....	18	5.6.7 Send Picture Messages .....	28
5.2.3 Movie Player Menu Items .....	18	5.6.9 Control Buttons for New MMS.....	28
5.3 I CAN PLAY MUSIC.....	19	5.7 I CAN TELL YOU WHERE YOU ARE .....	29
5.3.1 Music Player Keypad Functionality .....	19	5.6.10 Menu Items for New MMS .....	29
5.4 I CAN TAKE PICTURES .....	20		
5.3.2 Control Button for Music Player .....	20		



# INDEX

5.7.1 Control Buttons for Web Services .....	29	5.9.23 Signals & Sounds.....	42
5.7.2 GPS Coverage Data .....	30	5.9.24 Alert Mode.....	42
5.7.3 GeoFence .....	30	5.9.25 Message Received Tone .....	43
5.7.4 Web Services .....	32	5.9.26 Worldwide Time .....	43
5.8 Applications .....	32	<b>6.0 LOCATION-BASED SERVICES .....</b>	<b>44</b>
5.8.1 Alarm Clock .....	32	6.1 Where Am I (WAI).....	44
5.8.2 Calculator.....	33	6.2 Find the Nearest .....	45
5.8.3 Currency Converter.....	33	6.3 Tracking by Guardian .....	45
5.8.4 Bluetooth™ Receive Menu.....	33	6.1.1 Control Buttons for WAI.....	45
5.9 Settings .....	34	<b>7.0 EMERGENCY ALARM/DIRECT ALERT.....</b>	<b>46</b>
5.9.1 Device Info .....	34	<b>8.0 ACTIVESYNC .....</b>	<b>47</b>
5.9.2 Protected Settings.....	35	<b>9.0 UPDATING YOUR GIZMONDO™ DEVICE'S SOFTWARE.....</b>	<b>50</b>
5.9.3 Tracking/Alarm/GeoFence Settings – WRONG TITLE.....	35	9.1 Software update via SD Card .....	50
5.9.6 Device Settings.....	36	9.2 Software update via ActiveSync .....	51
5.9.7 Re-registering the Device.....	36	<b>10.0 SYSTEM REQUIREMENTS .....</b>	<b>52</b>
5.9.8 Change Protected PIN .....	36	<b>11.0 TROUBLESHOOTING .....</b>	<b>53</b>
5.9.4 Control Buttons for Tracking/Alarm .....	36	<b>12.0 APPENDIX A.....</b>	<b>56</b>
5.9.5 Control Buttons for GeoFence Settings.....	36	<b>13.0 APPENDIX B.....</b>	<b>57</b>
5.9.12 Uninstall Programs.....	37	13.1 Operational Temperature Range .....	57
5.9.9 Control Buttons for Change Protected PIN .....	37	13.2 Physical Dimensions .....	57
5.9.11 Control Buttons for Delete Saved Games.....	37	13.2.1 Size .....	57
5.9.13 MMS Settings.....	38	13.2.2 Weight.....	57
5.9.14 GPRS Settings .....	38	13.2.3 Audio Socket.....	57
5.9.15 GSM Settings .....	39		
5.9.16 Change GSM PIN.....	39		
5.9.17 Enable/Disable PIN Locking.....	39		
5.9.18 Check Balance.....	39		
5.9.19 SIM Administration.....	40		
5.9.20 Visual Appearance .....	40		
5.9.21 Wallpaper Settings .....	41		
5.9.22 Skins .....	42		



# INDEX

13.2.4 SD Card .....	57
13.3 DC connector.....	57
13.4 GSM .....	57
13.5 GPRS .....	57
13.6 SIM.....	57
13.7 Real-time Clock (RTC) .....	57
13.8 Optics and Camera .....	57
13.9 Supported Audio Formats .....	57
13.10 Supported Video Formats.....	58
13.11 Polyphonic Sounds.....	58
13.12 Speaker .....	58
13.13 Stereo Headphones.....	58
13.14 Memory .....	58
13.15 Display .....	58
13.16 Vibrate mode.....	58
13.17 Power Supply .....	58
13.18 DC Connector .....	58
13.19 USB .....	58
13.20 GPS Specification.....	59
13.21 Operating System.....	59
14. HELPLINE.....	60



# 1.0 INTRODUCTION

## WELCOME

Congratulations on purchasing the most powerful multi-entertainment console on the planet, the Gizmondo™ device. This guide will show you how to get the most from your new console.

With your Gizmondo™ device, you will experience the following:

- Games
- Music
- Movies
- SMS and Picture messaging
- Photography
- GPS

In addition to the main functionality you can:

- Experience Multi-player gaming via GPRS and Bluetooth™
- Store and Playback MP3, WMA, WMV and Mpeg4
- Tri-band GSM and GPRS to enable your messaging and email
- Connect via USB 2.0 to your PC

Other functions you'll find on your unit are:

- Contacts book
- Calculator
- Currency converter
- Clock with Alarm

This guide will provide you with all the information required to make the most of your Gizmondo™ device.



## 2.0 INSIDE YOUR GIZMONDO™ DEVICE BOX

### 2.1 WHEN YOU OPEN YOUR GIZMONDO™ DEVICE BOX, YOU SHOULD FIND THE FOLLOWING:

- Gizmondo™ device
- Charger
- Battery
- Getting Started User Guide
- CD featuring In-Depth User Guide, USB drivers and ActiveSync software
- Pre Pay SIM card
- Headphones
- USB cable

### 2.2 GETTING STARTED: SIM CARD

Locate your pre-pay SIM card that has been supplied in your packaging. You will be required to carefully push your SIM card from its plastic surroundings.

Your Gizmondo™ device requires a SIM card in order to function. Insert your SIM card

Remove the battery cover and battery and lift the SIM card holder up from inside your Gizmondo™ device. Insert your SIM card into the SIM card holder and replace battery and cover to your device (ensure that your battery is inserted correctly, with the contact points).

**NOTE:** Please do this for your children and ensure that the battery and battery case are replaced correctly.

If no SIM is installed, you'll see the following message displayed:



**NOTE:** The SIM card must be handled and stored with care in order not to be damaged. If you lose the SIM card, you must contact the Network Service Provider. SIM Cards must be kept out of reach of young children.

### 2.3 GETTING STARTED: YOUR BATTERY AND CHARGER

We recommend that you charge your new Gizmondo™ device for a minimum of 5 hours in order to achieve optimum performance. Optimum performance is reached after a few cycles

To charge your battery, do the following:

1. Connect the charger to a socket.
2. Plug the end of the cable into the bottom connector of the Gizmondo™ device unit.

The first time you charge your Gizmondo™ device, your battery indicator on the screen, will show a scrolling bar indicating that the unit is charging. When your Gizmondo™ device has completed charged, your battery indicator will show a full battery icon.

When your battery is running low, your Gizmondo™ device displays the following messages:



You'll also see the battery icon flash. You'll need to quit what you're doing and charge your battery for at least 1 hour, or else you risk losing what you're doing, such as writing SMS messages, saving digital photos and so on.



## 2.0 INSIDE YOUR GIZMONDO™ DEVICE BOX

**NOTE:** There is danger of explosion if the battery is placed in an incorrectly manner or if it is exposed to fire. Do not short-circuit it. The battery does not have any part that the user can change. The user must not try to open the battery casing. The user must only use the appropriate chargers and batteries recommended for this unit. Used batteries must be disposed of in the appropriate places. Gizmondo Europe Ltd advises that you take the battery out of the unit if you plan not to use the unit for long extended periods.

### 2.4 I CAN...GIZMONDO™ DEVICE KEYS AND NAVIGATION

In order to make your Gizmondo™ device as accessible as possible, we've made all action keys very recognizable and simple to use. Button behaviour is simple and intuitive so you should be able to predict controls and navigate throughout the device.

1. D-Pad
2. L Shift
3. Home
4. Volume
5. Brightness
6. Alarm
7. Power
8. R Menu
9. Camera
10. Stop/Back
11. Rewind
12. Fast Forward
13. Play/Accept
14. Battery Cover
15. SD Card Slot
16. Headphone Socket
17. USB Socket
18. Power Socket





## 2.0 INSIDE YOUR GIZMONDO™ DEVICE BOX

2.5 BUTTON AND FUNCTIONS OVERVIEW			
Button	Function	Action	Description
1. Play	Accept	Single Tap	Selects the highlighted object
2. Stop	Decline/Exit	Single Tap	Exits current feature/application. Delete last character if inputting
3. Rewind		Single Tap	
4. Forward		Single Tap	
5. Home (Piano Key 1)		Single Tap	Takes user to the menu listing all device features/applications
6. Volume (Piano Key 2)	Pop-up bar	Single Tap	Displays volume pop-up bar. This is controlled by the D-Pad. If no input for 3 seconds then the onscreen menu closes.
7. Brightness (Piano Key 3)	Pop-up bar	Single Tap	Displays brightness pop-up bar. This is controlled by the D-Pad. If no input for 3 seconds then the onscreen menu closes.
8. Alarm (Piano Key 4)	Alert	Single Tap	Sends an alert SMS to the server
9. Power (Piano Key 5)	Pop-up bar	Single Tap	Displays power menu options.
10. D-Pad or Browser	Navigation	8 way directional button	Navigate the highlighted screen or application
11. Shift		Held down	Provides other functionality to other buttons
12. Menu	Pop-up selection	Single Tap	Menu: Off Suspend Flight Mode Etc Then: Turn off yes/no
13. Shift + Home	Keypad lock	Held down together	Locks unit, all buttons become inoperative until keypad lock is disabled
14. Shift + Volume	GPS diagnostics	Held down together	Displays GPS settings.
15. Home + Power	Reset	Held down together	Resets unit



## 2.0 INSIDE YOUR GIZMONDO™ DEVICE BOX

### 2.6 YOUR GIZMONDO™ DEVICE CONTROLS IN DETAIL

The main menu allows you to access all the features of your Gizmondo™ device



Once inside the main menu, press the D-pad up and down to navigate within your menu and choose one of the 9 applications, to select an application the ACCEPT/SELECT button must be pressed.

The Keypad has four buttons. In order to promote predictability the ACCEPT action is PLAY and the DECLINE or BACK action is STOP. Pressing the BACK button allows you to access the previous screen. This feature means that you won't get lost while navigating the system. This functionality remains constant throughout all device operations.

The ACCEPT and BACK/DECLINE feature is triggered by pressing the allocated keypad button once. The key-lock can be set by holding SHIFT and then pressing the MENU piano key button. Upon activation a 'KEY LOCK ON' pop-up icon is displayed before reducing to the task information bar at the bottom of the page.



If the keypad is locked then any key action will cause "Press Shift and Pause to unlock the keypad" to be displayed. All button input is ignored except for the unlock sequence. Setting the keypad lock will not disturb any device operations from performing, such as media playback.

The hard reset is when you return your Gizmondo™ device to its factory settings. This will erase all settings you've previously entered, and you'll need to reregister the unit. You can perform a hard restart by holding down the HOME and POWER piano key button together for 15 seconds.

Pressing the Volume or Brightness button once causes the volume/brightness meters to overlay the current screen. To increase volume/brightness the user must press the D-Pad (east) button. To decrease volume/brightness the user must press the D-Pad (west) button.



When the POWER button is pressed a pop-up menu will be displayed. Navigation on the menu is controlled by the D-Pad, pressing the accept button will select the highlighted option.



## 2.0 INSIDE YOUR GIZMONDO™ DEVICE BOX

2.7 POWER MENU	
Menu Item	Description
Stand by	Puts the unit into stand by mode. This does not switch communications off with the device and is therefore the preferred option when 'powering-down' the terminal.
Power Off	Causes the unit to enter Suspend mode. This does not switch the terminal off.
Flight Mode On	Triggers flight mode, i.e. GSM/GPRS modem de-activated.. You should make sure you do this before using your Gizmondo™ device on an aeroplane
Flight Mode Off	Deactivates flight mode
Back	Returns user to previous page



# 3.0 REGISTERING YOUR GIZMONDO™ DEVICE

1. 
2. 
3. 
4. 
5. 

## 3.1 USER REGISTRATION

Now you'll need to register your Gizmondo™ device. Be advised that once you've started the registration process, you won't be able to cancel it, or access any other application on your Gizmondo™ device.

## 3.2 PERSONAL DETAILS

Here you should enter personal details such as your name, where you live, your gender and your date of birth. You'll also be asked whether you

would like to participate in our Smart Adds' program. Smart Adds' is a range of services that will offer you discounts and promotions for goods, based on the time of day and your current location. They may involve a voucher to a local restaurant for lunchtime, for example, or a clip of a movie showing at your local cinema on the upcoming Friday. In return for opting into the Smart Adds' program, you will also receive discounts on Gizmondo' device services, such as money off music downloads or free ringtones. You will receive no more than 3 such Smart Adds' in a day.

The Smart Adds' program adheres to the relevant statutes and industry 'Codes of Practice'. In particular, these include the Data Protection Act and the codes covering mobile advertising. Any comments regarding advertising should be directed in the first instance to:

**Smart Adds' Program**  
**Gizmondo Europe Limited**  
 1 Meadow Gate Avenue  
 Farnborough Business Park  
 Farnborough  
 Hampshire  
 GU14 6FG  
 +44 (0) 1252 557 100  
 Email: peter.lilley@tigertelematics.com

## 3.3 SIM PIN

If the subscriber identity module (SIM) card requires a personal identification number (PIN) for activation then the user will be requested to input this number via the numeric SIP grid.



## 3.0 REGISTERING YOUR GIZMONDO™ DEVICE

### 3.4 GUARDIAN REGISTRATION

Guardian registration is done via the Gizmondo™ device website. Registering as a Guardian is a measure that enables parents to take advantage of some of Gizmondo™ device's tracking features. For example, it enables you to receive urgent/emergency messages from your children if they use the applicable button. Guardian registration also enables GeoFences to be set up. These are virtual boundaries of a particular radius established around a Gizmondo™ device's current location. Should it wander outside the set boundary the Guardian receives an alert. The Guardian sets a time limit within which the GeoFence is active, as well as a time when the GeoFence should go live.

Registering as a Guardian can be done from the MyGiz link at [www.gizmondo.com](http://www.gizmondo.com).

When your registration is complete, you'll receive an SMS message with your terminal's username and password. This can be used to register for additional services at [www.gizmondo.com](http://www.gizmondo.com).








Once you've installed your SIM card and charged your battery, you're ready to get going on your Gizmondo™ device



# 4.0 THE GIZMONDO™ DEVICE INTERFACE





Once the unit has been registered the user is directed to the MENU default home page. This screen is usually presented whenever the unit is powered up.

Status indicators are grouped at the bottom of the screen and remain in the same position across other screen displays.

4.1 STATUS INDICATORS AND ICONS			
Indicator	Image	Screen	Description
Time	24 hour clock display	All	The time will automatically display the local time. The format 12/24 hour clock can be set by the user via the settings menu.
Date	Numeric	Homepage	Displays date
GPRS Connected / disconnected	 /blank	All	The GPRS indicator has two images that signify connected or disconnected
Signal Strength (GSM network)		All	The signal strength indicator has 5 settings representing 0, 25 per cent, 50 per cent, 75 per cent and 100 per cent.
GSM Antennae		ALL	Antennae above Signal Strength
Network Name	Text	All	Network name or text indicating flight mode if this enabled.
Battery strength or charging (on AC power)		All	The battery indicator will either display a battery strength icon or a charge icon. The battery strength icon represents 0, 25 per cent, 50 per cent, 75 per cent and 100 per cent charged.
Mute mode		All	The mute icon only appears when the unit is in mute mode.
New SMS Message		All	The envelope icon represents new SMS. This only appears if a new SMS message has been received. It remains until the message has been opened by the user.
New MMS Message		All	The envelope icon represents new MMS. This only appears if a new MMS message has been received. It remains until the message has been opened by the user.



## 4.0 THE GIZMONDO™ DEVICE INTERFACE

New Email Message		All	The envelope icon represents new Email. This only appears if a new Email message has been received. It remains until the message has been opened by the user.
Several New Messages		All	The envelopes icon represents several new messages. This only appears if a several messages have been received. It remains until the messages have been opened by the user.
Keypad Locked		All	
Device Paused		All	
Navigation Fix		Homepage	Lets you know that your GIZMONDO™ DEVICE unit has established an up-to-date GPS navigation fix.



# 5.0 GIZMONDO™ DEVICE APPLICATIONS

There are 9 items in your Gizmondo™ device's main MENU. They are:

1. Games



2. Movies



3. Music



4. Messaging



5. GPS & Web



6. Camera and Images



7. Contacts



8. Applications



9. Settings



## 5.1 I CAN PLAY GAMES

Gizmondo™ device games are supplied to you on SD cards.

Gizmondo™ Studios' licence Games for Gizmondo™ device and as button controls will vary game to game, all games will be shipped with user manuals for game control functions.

Ensure you READ your game manual when you purchase your first Gizmondo™ device pre-packed game.

However, when you get your first game for your Gizmondo™ device, you should:

1. Insert the SD Card to the slot on the underside of your Gizmondo™ device's underside
2. You'll be asked whether you'd like to play the game. If you accept, the game will launch automatically. If you decline, you can leave the SD Card in and simply choose Game from the main MENU interface later on.



3. When you're finished playing, you may remove the SD Card. Do not try to remove it while the game is in progress





## 5.0 GIZMONDO™ DEVICE APPLICATIONS

### 5.2 I CAN WATCH MOVIES

With the movie player, you can playback video content stored either on the device or from an SD card. The list of movie files available shows up automatically, with those stored on your Gizmondo™ device's internal memory appearing first. Files on the SD card will be highlighted in a different colour.

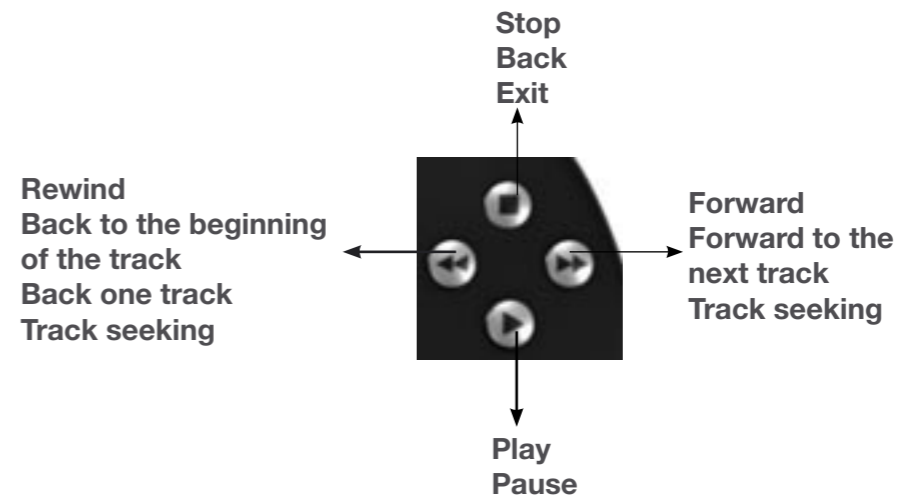
The movie player screen is divided into three areas. These are:

1. Movie List
2. Preview Screen
3. Function/Control Icons



The keypad buttons are intuitively designed to perform media operations. For example, press the Accept/Select button to PLAY, the Back/Decline to STOP, and so on.

#### 5.2.1 MOVIE PLAYER KEYPAD FUNCTIONALITY



When a control function has been selected, the associated control icon is highlighted. Mute and volume are controlled via the piano key buttons.



## 5.0 GIZMONDO™ DEVICE APPLICATIONS

5.2.2 CONTROL BUTTONS FOR MOVIE PLAYER		
Button	Action	Description
Accept/ select	Tap Once	Plays Highlighted Movie
	Tap Twice	Pauses Highlighted Movie
Back/ decline	Tap Once	Stops Movie
	Tap Twice	If In Full Screen Mode, This Will Revert Back To The Preview Mode
	Tap Three Times	Exits Application (If In Full Mode Screen)
Rewind	Tap Once	The Current Played Movie Will Start From The Beginning
	Tap Twice	Plays Previous Movie
	Held Down	Rewinds Current Movie
Forward	Tap Once	Forwards To The Next Movie
	Held Down	Forwards Current Movie
Shift & Accept/ select	Hold Down Shift And Tap Accept/ select	Plays Movie In Full Screen
D-pad	Tap (North/ south)	Moves Between Movie List

5.2.3 MOVIE PLAYER MENU ITEMS	
Menu Item	Description
Play	Plays movie
Stop	Stops current played movie
Full Screen	Plays movie in full screen
Delete	Deletes selected movie
Beam to Device	The selected file will be sent via Bluetooth to another terminal

**NOTE:** If the Music Player is playing when a movie file is accepted then the Music Player will automatically pause. The Music Player cannot be resumed while the Movie Player is open.

When performing the 'Seek' function the below seek bar is displayed:



The colour of the bar is linked to the SKIN type.

**NOTE:** If you press the MENU HOMEPAGE button while watching a movie, it will be 'paused'. When returning to the movie application, pressing the PLAY/ACCEPT button resumes the movie file. This can happen in either the full screen or thumbnail preview mode.



## 5.0 GIZMONDO™ DEVICE APPLICATIONS

### 5.3 I CAN PLAY MUSIC

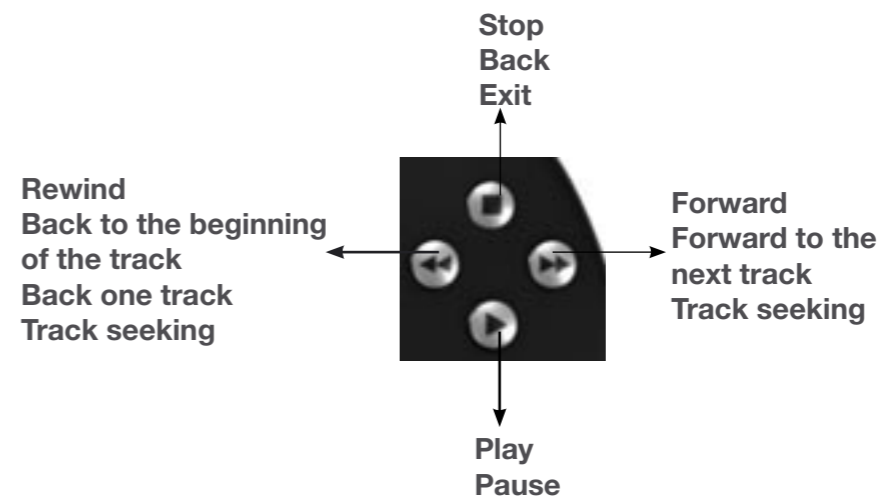
The music player feature enables you to playback music files that are stored internally or on the SD card. In terms of control and functionality, the application runs in parallel to the Movie Player. The music player will first verify each music file and ascertain whether there is a name field. If it finds none, the file will be presented as “-filename”. The player also shows the track length in min.sec format. However, if the filename size is too long then this will impede visibility on the track duration from being displayed

Album list is shown on a rolling folder from the left-hand side of the screen. You can view this folder by pressing the east D-Pad button. This folder makes it possible for more information to be shown on the screen. Navigation of the album list is governed by the north/south D-Pad. Albums are listed on the left with the associated track on the right.



Tracks can only be selected when you're not currently playing a file. This is controlled by the keypad REWIND and FORWARD buttons, or the north/south D-Pad when the rolling folder album list is not displayed. Music control icons are highlighted once a track is playing.

### 5.3.1 MUSIC PLAYER KEYPAD FUNCTIONALITY

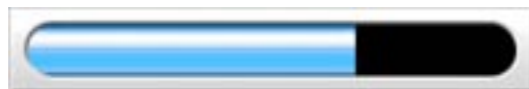


## 5.0 GIZMONDO™ DEVICE APPLICATIONS

5.3.2 CONTROL BUTTON FOR MUSIC PLAYER		
Button	Action	Description
Accept/ Select	Tap once	Plays highlighted track
	Tap Twice	Pauses highlighted track
Back/ Decline	Tap once	Stops track
	Tap twice	Exits application
Rewind	Tap once	The current played track will start from the beginning
	Tap twice	Plays previous track
	Held down	Rewinds current track
	Tap once	When track is not being played, this selects the previous track
Forward	Tap once	Forwards to the next track
	Held down	Forwards current track
	Tap once	When track is not being played, this selects the next track in the list
D-Pad	Right	Opens rolling album folder
	Up/Down	Scrolls between folder list

5.3.3 MUSIC PLAYER MENU ITEMS	
Menu Item	Description
Play	Plays selected track
Stop	Stops current track
Pause	Pauses current track
Track Repeat	Repeats selected track
Folder Repeat	Repeats selected folder
Random Device	Randomly plays any track in all folders
Random Folder	Randomly plays any track in selected folder
Continuous Play	Plays all tracks throughout the music list continuously
Beam to Device	Sends selected track to another device via Bluetooth

When performing the 'Seek' function, the below seek bar is displayed:



The colour of the bar is linked to the SKIN type.

### 5.4 I CAN TAKE PICTURES

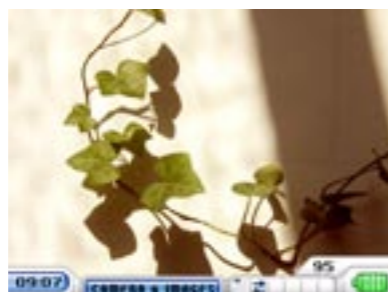
Take and send photos using your Gizmondo™ device, your device allows you to take photos and share them with other Gizmondo™ device users and friends, picture are stored in My pictures folder on the root directory, you may also store pictures on SD cards.

MyPicture folder will automatically be displayed when you capture an image



## 5.0 GIZMONDO™ DEVICE APPLICATIONS

Select your Camera Function from your main function, and your Gizmondo™ device screen will become your view finder



### 5.4.2 MY PICTURES CONTROLS

Button	Action	Description
Accept/Select	Tap	Selects image and displays it on the full screen In display zoom in on image
Decline/Cancel	Tap	If in display mode, this zooms out until 100 per cent display is viewable If you're in My Pictures, the screen will jump back to viewfinder
D-Pad	Tap in required direction	Navigates through feature Pans image if magnified If image is selected in full screen mode, moves between previous and next image

### 5.4.1 GIZMONDO™ DEVICE CAMERA CONTROL BUTTONS

Button	Action	Description
Accept/Select	Tap	Take/captures image
Decline/Back	Tap	Returns to previous screen
Shift and Accept/Select	Hold Shift and Accept/Select together	Takes pictures as quickly as possible while the Accept button is depressed
Menu	Tap	Refer to below table



## 5.0 GIZMONDO™ DEVICE APPLICATIONS

### 5.4.3 MENU ITEMS FOR MY PICTURES

Menu Item	Description
Full screen	Open image currently highlighted
Select	Selects highlighted image
Rename	Renames selected image or folder
Cut Selection	Moves selected image(s) or folder(s)
Copy Selection	Copies selected image(s) or folder(s)
Paste	Pastes selected image
Delete Selection	Deletes selected image(s) or folder(s)
Toggle View	Toggle between internal and external media
Sort by date	Sorts images in chronological order
Sort by name	Sorts images in alphabetical order
New Folder	Creates a folder called "New Folder"
Select All	Selects all images and folders
Select None	De-Selects selected image(s) or folder(s)
Send	Sends selected image via Bluetooth or MMS

### 5.4.4 MOVING AND COPYING IMAGES

This feature enables you to move and copy images to separate folders, based in either internal or external memory such as an SD Card.



To enable this, you should do the following:

1. Highlight the required image or folder. Holding the SHIFT button allows you to select multiple images/folders. Images/folders will remain highlighted until the move/copy is initiated from the MENU or you press decline.
2. Navigate to the required directory/folder. A new folder can be created from My Pictures or within an existing folder by tapping the MENU key (right hand shoulder) and scrolling to the appropriate option.
3. Select move/paste from the MENU box will then paste the highlighted images/folders.

**NOTE:** files can not be copied or moved into a folder that is also within the selection



## 5.0 GIZMONDO™ DEVICE APPLICATIONS

### 5.4.5 VIEWING IMAGES

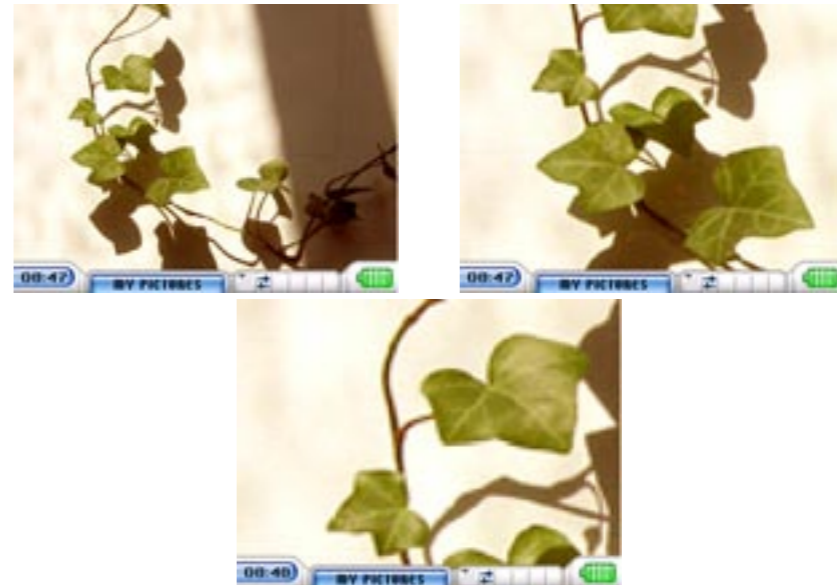
Pressing Accept on a highlighted image causes the selected image to be displayed in full screen. The D-Pad west/east buttons can be used to scroll to the next or previous image. Pressing the Accept button again will zoom in on the current image. There are 5 zoom levels in total. You can even pan around the magnified image using the D-Pad.

#### 5.4.6 CONTROLS WHEN VIEWING PICTURES IN FULL SCREEN

Menu Item	Action	Description
Accept/Select	Tap	Zoom in on image
Decline/Cancel	Tap	Zoom out until in My Pictures
Decline & Shift	Hold Shift and tap Decline	Back to previous page
D-Pad	Tap in required direction	Move between images in required direction. Once in full screen display mode left/right moves between previous and next image

### 5.4.7 ZOOM MODE

The zoom mode is accessible from the full screen viewing mode. When the user presses Accept the image will be magnified. There are 5 zoom levels.



#### 5.4.8 CONTROL BUTTONS FOR ZOOM FUNCTION

Button	Action	Description
Accept/Select	Tap	Zoom in on image
Decline/Cancel	Tap	Zoom out until in My Pictures
SHIFT & Decline	Hold SHIFT and tap decline	Back to previous screen
D-PAD	Tap in required direction	Pans around image when magnified

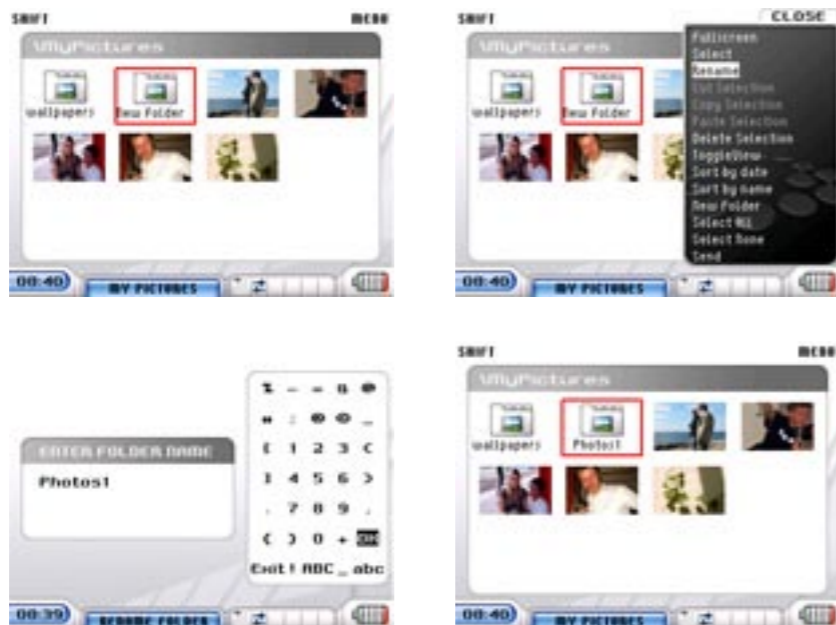


## 5.0 GIZMONDO™ DEVICE APPLICATIONS

### 5.4.9 RENAMING A FOLDER

To rename a folder the following process must be performed:

1. Navigate to the desired folder
2. Tap the MENU button (right hand shoulder key) to bring up a drop down menu
3. From this drop down menu, select Rename
4. A letter SIP grid appears allowing the user to rename the folder
5. Once the desired name has been entered, select OK on the SIP grid
6. You'll be returned to the My Pictures directory
- 7.



### 5.4.10 CONTROL BUTTONS FOR RENAMING A FOLDER

Button	Action	Description
Accept/Select	Tap	Select current highlighted letter and prints it into text box
Decline/Cancel	Tap	Deletes last letter in text box
SHIFT & Decline	Hold SHIFT and tap decline	Back to previous screen
D-PAD	Tap in required direction	Moves around SIP grid

### 5.4.11 SAVING A RENAMED FOLDER

Button	Description
Save	Saves current box contents as name of selected folder
Cancel	Returns you to My Pictures, i.e. no change performed to Folder Name





## 5.0 GIZMONDO™ DEVICE APPLICATIONS

### 5.5 CONTACTS

The Contacts application is designed to be compatible with Microsoft address book as used by PC applications like Outlook and Outlook Express. The ActiveSync connection to a PC enables your contacts to be synchronized between the device and your desktop computer.

The contacts screen enables you to manage your address book of contacts. You're presented with a list of names and their corresponding contact details. An index bar helps you to navigate quickly and easily through the list. The screen also displays the number of contacts and which contact out of the total is being viewed.



### 5.5.2 MENU ITEMS FOR CONTACTS

Menu Item	Description
New Contact	Allows user to add a new contact
New SMS Message	Directs user to SIP text grid to compose a SMS message
New MMS Message	Directs user to SIP text grid to compose a MMS message
Edit	Edits highlighted contact
Delete	Deletes highlighted contact
Main Menu	Directs user back to menu home page
Back	Directs user to the previous screen



### 5.5.1 CONTROL BUTTONS FOR CONTACTS

Button	Action	Description
Accept/Select	Tap	Selects highlighted contact
Decline/Cancel	Tap	Returns user to Menu home page
SHIFT & Decline	Hold SHIFT & tap decline	Goes back to previous screen



## 5.0 GIZMONDO™ DEVICE APPLICATIONS

### 5.6 I CAN SEND SMS AND PICTURE MESSAGING/MMS

Your Gizmondo™ device changes the way you communicate with your friends and other Gizmondo™ device users, using the messaging application, you can send and receive SMS and picture. These will be stored according to the message format; i.e. SMS will be stored with SMS Messages and picture with picture messages. Therefore, when clicking on the 'Messaging' option from the main menu, you will have a choice of selecting the following:

- All Messages
- SMS
- MMS



New received messages have different icons. These are as follows:

 = new sms message

 = new mms message

 = several new message

### 5.6.1 CONTROL BUTTONS FOR MESSAGING

Button	Action	Description
Accept/Select	Tap	Opens highlighted message
D-Pad	Directional	Navigates through message list
SHIFT & D-Pad	Hold SHIFT & move D-Pad as required (directional)	Navigates through message list one screen per time

### 5.6.2 MENU ITEMS FOR MESSAGING

Menu Item	Description
Delete message	Deletes highlighted message
New SMS Message	Directs you to SIP text grid to compose a SMS message
New MMS Message	Directs you to SIP text grid to compose a MMS message
Reply to message	Replies to highlighted message
Forward Message	Forwards highlighted message
Archive message	Sends highlighted message to the SD card
Go to folder...	Displays pop-up window showing folder list
Delete All in List	Deletes all messages in list



## 5.0 GIZMONDO™ DEVICE APPLICATIONS

### 5.6.3 SMS

The New SMS feature lets you compose text messages. At the top of the screen, you'll see the message recipient. In addition, you'll be able to navigate around the SIP text grid via the D-Pad. Choose your letters using the ACCEPT button, and you'll be able to put together your text. Use the REWIND button to switch between different fonts or the numeric SIP grid.



### 5.6.4 COMPOSING AN SMS MESSAGE

1. From the right-shoulder button, press the MENU and select 'New SMS message'.
2. Compose SMS message by using the text SIP grid
3. Press MENU button and either select 'Add Contact' or 'Add Number'.
4. If 'Add Contact', select contact from contacts list. If 'Add Number', type handset number via numeric SIP grid.
5. Select 'Save' from MENU.
6. Select 'Send' from MENU.
7. SMS message will be sent.

### 5.6.5 BUTTON CONTROL FOR NEW SMS

Button	Action	Description
Accept/Select	Tap	Prints highlighted letter to message screen
Decline/Cancel	Tap	Deletes highlighted letter from message
D-Pad	Directional	Navigates SIP grid
SHIFT & Decline	Hold SHIFT & tap decline	Back to previous screen

### 5.6.6 MENU ITEMS FOR NEW SMS

Menu Item	Description
Send	Sends SMS message
Add Contact	Adds another message recipient – directs user to Contacts
Add Number	Adds a number to send to
Save to Drafts	Saves message to the drafts folder
Clear Text	Clears the message screen but retains recipients
Main Menu	Directs you to the Menu home page
Back	Directs you to message list, e.g. Inbox



## 5.0 GIZMONDO™ DEVICE APPLICATIONS

### 5.6.7 SEND PICTURE MESSAGES

The MMS feature allows you to compose picture messages. The interface is identical to the new SMS feature, but it retains a placeholder for the required image.



1. From the right-shoulder button, press the MENU and select 'New MMS message'.
2. Compose text by using the text SIP grid
3. Press MENU button and select 'Add Picture'.
4. You'll be taken to the My Pictures Directory to select picture.
5. Press MENU button and either select 'Add Contact' or 'Add Number'.
6. If 'Add Contact', select contact from contacts list. If 'Add Number', type handset number via numeric SIP grid.
7. Select 'Save' from MENU.
8. Select 'Send' from MENU.

### 5.6.9 CONTROL BUTTONS FOR NEW MMS

Button	Action	Description
Accept/Select	Tap	Prints highlighted letter to message screen
Decline/Cancel	Tap	Deletes highlighted letter from message
D-Pad	Directional	Navigates SIP grid
SHIFT & Decline	Hold SHIFT & tap decline	Back to previous screen



## 5.0 GIZMONDO™ DEVICE APPLICATIONS

5.6.10 MENU ITEMS FOR NEW MMS	
Menu Item	Description
Send	Sends MMS message
Add Contact	Adds another message recipient – directs you to Contacts
Add Number	Adds a number to send to
Save to Drafts	Saves message to the drafts folder
Clear Text	Clears the message screen but retains recipients
Main Menu	Directs you to the Menu home page
Back	Directs you to message list, e.g. Inbox

### 5.7 I CAN TELL YOU WHERE YOU ARE

Your Gizmondo™ device has an in-built GPS antenna, which allows it to acquire information from positioning satellites. GPS was originally conceived as a fool-proof navigation system by the US military, but has been used for civilian purposes since the last 1980s.

GPS stands for Global Positioning System, and consists of a network of 24 satellites that orbit the earth twice a day. Each of them emits a signal. Devices like your Gizmondo™ device can hear these signals, and figure out where a GPS satellite is. If it can hear three or more, a GPS receiver, like your Gizmondo™ device can work out where you are at a certain time: i.e. your exact longitude, latitude and altitude.

This feature means that as long as your Gizmondo™ device be ‘seen’ by a minimum number of satellites, your precise position can be formulated. Gizmondo™ device uses this information in a number of applications, including certain games, mapping and tracking applications and pay-to-use services.

When you select GPS from the MENU home page, a submenu is displayed, showing the following:

- GPS Data
- Set GeoFence
- Web Services



### 5.7.1 CONTROL BUTTONS FOR WEB SERVICES

Button	Action	Description
Accept/Select	Tap	Opens highlighted link
Decline/Cancel	Tap	Exits web page
REWIND	Tap	Previous web page
Shift & Accept	Hold SHIFT & Tap accept	Refreshes page
D-Pad	Directional	Navigates between links on page
SHIFT & Decline	Hold SHIFT & tap decline	Previous menu. Exit web services



## 5.0 GIZMONDO™ DEVICE APPLICATIONS

### 5.7.2 GPS COVERAGE DATA

When this choice selected, you're presented the following types of GPS data:

- Latitude
- Longitude
- Visible Satellites
- Used Satellites
- Margin of Error
- GPS Speed
- GPS Fix Time

You'll also see a tab marked Advanced at the bottom of the page.



If your Gizmondo™ device has established a GPS fix – that is it can receive clear signal from three satellites – you'll be able to take advantage of Gizmondo™ device's GPS features, outlined shortly. To check whether you've got a GPS fix, click on the Advanced tab mentioned previously. In the table that follows, at least three of the meter readings should be 30 or greater, the satellite icon in the top right corner should be green, and you should have a satellite icon in your main Menu window.

### 5.7.3 GEOFENCE

A GeoFence is a virtual boundaries of a user-defined radius established around a Gizmondo™ device's current location. Should it wander outside the set boundary, the Guardian receives an alert. The Guardian sets a time limit within which the GeoFence is active, as well as a time when

the GeoFence should go live.

There are three types of GeoFence requests: Set requests, Cancel requests and Status requests. Set and cancel request can be made on the Gizmondo™ device or online

Set requests contain a start time and/or a stop time. Once the parameters have been accepted, any previous active requests will be discarded and replaced by the new GeoFence. If the start time is later than the current time, the current GeoFence remains until the new GeoFence's start time. Once a GeoFence is processed, a request message is sent to the supervisory address (an SMS or email) to indicate the new status.

When a GeoFence Cancel request has been processed, a status message is sent to the supervisory address to indicate the new status.

GeoFence Status requests have no effect other than to send a status message to the supervisory address.

The GeoFence alarm cannot be triggered if the Gizmondo™ device's current position is not known, i.e. unit is unable to obtain a GPS fix. However, when GPS contact is reestablished, if the GeoFence is still active, an alarm message will be sent.

**PLEASE NOTE:** The GPS facility is not active whilst the Gizmondo™ device is in standby mode.



## 5.0 GIZMONDO™ DEVICE APPLICATIONS

Set a GeoFence Alarm from your Gizmondo™ device unit



If the unit has not established a good enough connection with the GPS satellites, a pop-up screen will be displayed stating you have insufficient GPS coverage.



Note also that while GPS is precise, nearly to the metre, if your Gizmondo™ device has an intermittent signal, you will receive a large Margin of Error reading in your GPS coverage Menu. You cannot set a GeoFence that is smaller than your Margin of Error.

To set a GeoFence from the terminal, the following must be done:

1. Select GPS and Web from the homepage
2. Select Set GeoFence
3. Select GeoFence parameter
4. Press Accept/Select
5. A pop-up message will be displayed confirming whether or not the message was successfully sent

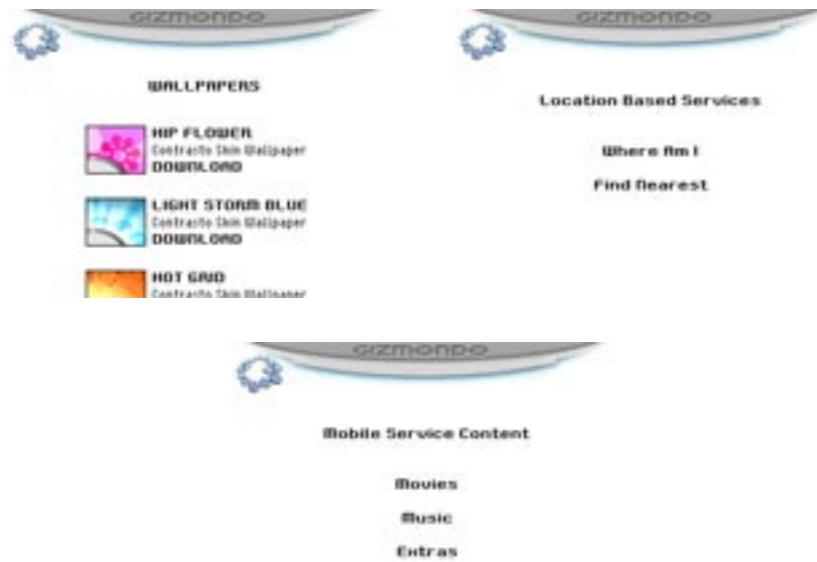


## 5.0 GIZMONDO™ DEVICE APPLICATIONS

### 5.7.4 WEB SERVICES

All Location-based Services (LBS) and Mobile Service Content (MSC) will be stored in this feature. Mobile Service Content encompasses ringtones, news and other content. Head to [www.gizmondo.com](http://www.gizmondo.com) to learn more about Mobile Service Content.

When clicking on this feature a progress bar is displayed when accessing a web page. When accessing online services a default web page is displayed. You cannot change this address.



LBS are as follows:

- Where Am I (WAI)
- Find the Nearest

### 5.8 APPLICATIONS

These are divided into four features:

1. Alarm Clock
2. Calculator
3. Currency Converter
4. Bluetooth™ Receive Menu



#### 5.8.1 ALARM CLOCK

This feature allows you to set an alarm at any specified time. You have the choice of tone and signal type. Unless cancelled, the alarm will rollover to the following day.

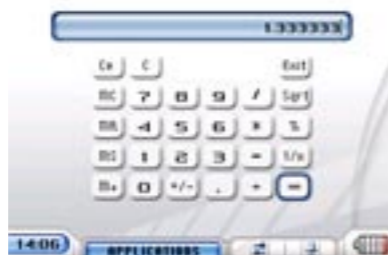




## 5.0 GIZMONDO™ DEVICE APPLICATIONS

### 5.8.2 CALCULATOR

You are able to use the calculator, navigating the virtual keypad using your D-Pad, and pressing ACCEPT to choose numerals or carry out calculations.



### 5.8.3 CURRENCY CONVERTER

Use your D-Pad to use your currency converter. Enter the currency details xxx.



### 5.8.4 BLUETOOTH™ RECEIVE MENU

When you're in this mode, you're able to receive files being transferred from other Gizmondo™ device terminals via Bluetooth™. You can't receive files unless you're in Bluetooth™ Receive mode.



## 5.0 GIZMONDO™ DEVICE APPLICATIONS

### 5.9 SETTINGS

This feature allows you to configure the Gizmondo™ device terminal. There are two types of users:

- User – the individual who uses the device more frequently
- Guardian/Owner – the individual who has more than likely purchased the device and paying for subscription to the GSM services

**NOTE:** You can be the Guardian/owner of your Gizmondo™ device if you're the primary user, too.

Settings are split into the following categories:

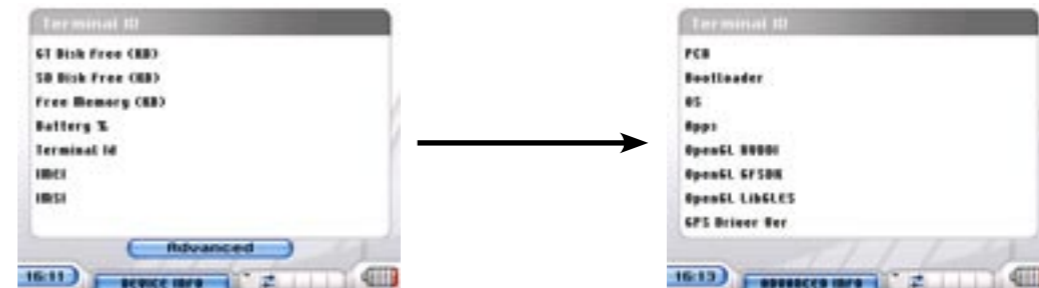
1. Signals & Sounds
2. Visual Appearance
3. Device Info
4. GSM Settings
5. Protected Settings
6. Worldwide time



### 5.9.1 DEVICE INFO

When selected from the Settings page, you're directed to device information page. This is divided into two pages. On the first page, there's the following information:

- GT Disk Free (KB)
- SD Disk Free (KB)
- Free Memory (Bytes)
- Battery %
- Terminal ID
- IMEI
- IMSI



At the bottom of the first page there is an option to click on 'Advanced' information. This shows the following:

- PCB
- Bootloader
- OS
- Apps
- OpenGL Nvidia
- OpenGL GFSDK
- OpenGL LibGLES

The associated information runs parallel to the information field entry.



## 5.0 GIZMONDO™ DEVICE APPLICATIONS

### 5.9.2 PROTECTED SETTINGS

To access the Protected Settings, you have to enter your PIN code.



Once accessed, you have the following menu display choices:

- Tracking/Alarm/GeoFence Settings
- Device Settings
- Email Settings



### 5.9.3 TRACKING/ALARM/GEOFENCE SETTINGS

Once accessed, the Guardian is able to activate unit tracking, allow emergency alarms and the ability to cancel any alarm.



You can navigate through the menu selection via the north/south D-Pad. To activate/de-activate any of the menu selection, toggle your D-Pad in the east/west direction.



## 5.0 GIZMONDO™ DEVICE APPLICATIONS

### 5.9.4 CONTROL BUTTONS FOR TRACKING/ALARM

Button	Menu Item	Action	Description
D-Pad West	Allow Unit Tracking	Tap	BLOCKS unit tracking
D-Pad East	BLOCK unit Tracking	Tap	ALLOWS unit tracking
D-Pad West	Allow Emergency Alarm	Tap	BLOCKS emergency alarm
D-Pad East	BLOCK Emergency Alarm	Tap	ALLOWS emergency alarm

### 5.9.5 CONTROL BUTTONS FOR GEOFENCE SETTINGS

Button	Action	Description
Accept/Select	Tap	Activates selected GeoFence parameter
Decline/Cancel	Tap	Previous screen
D-Pad	East/west	Decrease/increase parameter
D-Pad	North/South	Increase/decrease parameter
SHIFT & Decline	Hold SHIFT & tap decline	Previous screen

### 5.9.6 DEVICE SETTINGS

This allows you to re-register your Gizmondo™ device, change protected PIN, delete saved games and uninstall programs. Navigation is done via the D-Pad.

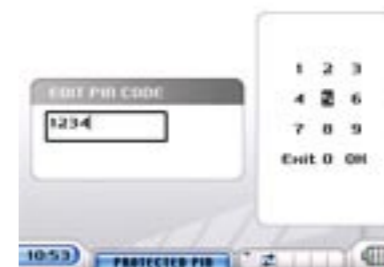


### 5.9.7 RE-REGISTERING THE DEVICE

Refer to section 3.0.

### 5.9.8 CHANGE PROTECTED PIN

You're directed to a numeric SIP grid.



This facility allows you to change the Protected Settings PIN code. It is automatically defaulted to 1 2 3 4.



## 5.0 GIZMONDO™ DEVICE APPLICATIONS

### 5.9.9 CONTROL BUTTONS FOR CHANGE PROTECTED PIN

Button	Action	Description
Accept/Select	Tap	Selects highlighted number
Decline/Cancel	Tap	Deletes highlighted number
D-Pad	Directional	Navigates around SIP grid table

### 5.9.10 Delete Saved Games

Enables you to select games stored internally or on the SD card for deletion.



### 5.9.11 CONTROL BUTTONS FOR DELETE SAVED GAMES

Button	Action	Description
Accept/Select	Tap	Deletes highlighted number
Decline/Cancel	Tap	Returns to previous screen
D-Pad	North/South	Scrolls between games

### 5.9.12 UNINSTALL PROGRAMS

Enables you to delete programs.



## 5.0 GIZMONDO™ DEVICE APPLICATIONS

### 5.9.13 MMS SETTINGS

This facility allows you to adjust pre-stored MMS settings manually. This includes the following:



### 5.9.14 GPRS SETTINGS

This facility allows you to adjust the pre-stored GPRS settings manually. This includes the following:



GPRSAccessPointName	Access point name for Internet connection
GPRSIP	IP address
GPRSPdpType	PDP Type (normally "IP")
GPRSConnectionName	Connection Name (name you see)
GPRSUserName	Username
GPRSPassword	Password

MMSAccessPointName	Access point name for MMS connection
MMSIP	IP address
MMSPdpType	PDP Type (normally "IP")
MMSConnectionName	Connection Name (name you see)
MMSUserName	Username
MMSPassword	Password
MMSGateway	Gateway to MMS server
MMSPort	MMS port
MMSAddr	Http address of MMS server

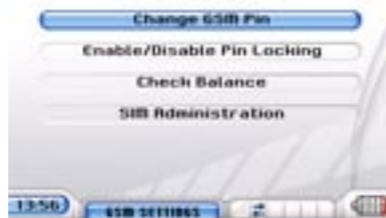


## 5.0 GIZMONDO™ DEVICE APPLICATIONS

### 5.9.15 GSM SETTINGS

This feature lets you reconfigure the SIM cards PIN code. The feature is split into two sections:

1. Change GSM PIN
2. Enable/Disable PIN Locking



### 5.9.16 CHANGE GSM PIN

You're directed to a numeric SIP grid. There you must confirm the present SIM code, enter the new SIM code, and finally confirm the chosen SIM code.

Button	Action	Description
D-Pad	Direction	Navigates around SIP grid
Accept/Select	Tap	Selects highlighted option
Back/Decline	Tap	Deletes or goes back one screen



### 5.9.17 ENABLE/DISABLE PIN LOCKING

Enabling/Disabling PIN locking will request the SIM code from you

before unit registration. When entering the feature, you'll be required to enter your SIM code before you're able to enable/disable this feature.



Button	Action	Description
D-Pad	Direction	Navigates around SIP grid
Accept/Select	Tap	Selects highlighted option
Back/Decline	Tap	Deletes or goes back one screen

### 5.9.18 CHECK BALANCE

This facility allows you to check the amount of credit remaining on your pre-paid SIM. At present, this is only configured for Vodafone pre-pay SIMs.



## 5.0 GIZMONDO™ DEVICE APPLICATIONS

### 5.9.19 SIM ADMINISTRATION

This facility allows you to ‘top-up’ your pre-pay SIM card. By entering the appropriate USSD command to the relevant network provider, you’ll be guided through the credit process.



### 5.9.20 VISUAL APPEARANCE

You can change the look of your Gizmondo™ device’s main interface.

Options include:

I. SKIN – UI style

II. Wallpaper – back-screen picture on Main Menu homepage screen.

This feature only works on the CONTRASTO SKIN type.





## 5.0 GIZMONDO™ DEVICE APPLICATIONS

### 5.9.21 WALLPAPER SETTINGS

When you select this option, you're directed to a new menu selection, which is as follows:

- Wallpaper Disabled/Enabled – informs you whether you have the functionality to change the wallpaper.
- Choose Picture – directs you to the My Pictures directory to select a wallpaper image

A selection of wallpapers will be pre-installed to the unit. These are as follows:



Button	Menu Item	Action	Description
D-Pad east	Wallpaper Disabled	Tap	Disables wallpaper feature
D-Pad west	Wallpaper Enabled	Tap	Enables wallpaper feature
Accept/Select	Choose Picture	Tap	Directs you to the My Pictures directory to select a wallpaper image



## 5.0 GIZMONDO™ DEVICE APPLICATIONS

### 5.9.22 SKINS

You can select the style of your Gizmondo™ device's user interface. The styles are as follows:



A preview screen is available for you before you confirm your choice.

### 5.9.23 SIGNALS & SOUNDS



You have two options, as follows:

- III. Alert Mode – vibrate/ring?
- IV. Message Received Tone – choice selected to those files in My Tones folder

### 5.9.24 ALERT MODE

Options include:

- Vibrate and Ring
- Vibrate Only
- Ring Only

Button	Action	Description
D-Pad	East/West	Scrolls between options



## 5.0 GIZMONDO™ DEVICE APPLICATIONS

### 5.9.25 MESSAGE RECEIVED TONE

You can choose any tone from the 'My Tones' directory (contained on your Gizmondo™ device's internal memory).

Button	Action	Description
D-Pad	East/West	Scrolls between options

You can alter your Gizmondo™ device's messages received tone. When highlighting the menu feature, by pressing the D-Pad east/west you can select the appropriate tone.

Button	Action	Description
D-Pad	East/West	Scrolls between options

### 5.9.26 WORLDWIDE TIME

This facility allows the user to search for other world times. It automatically defaults to (GMT) Greenwich Mean Time: Dublin, Edinburgh, Lisbon, London.

Button	Action	Description
D-Pad	East/West	Scrolls between options



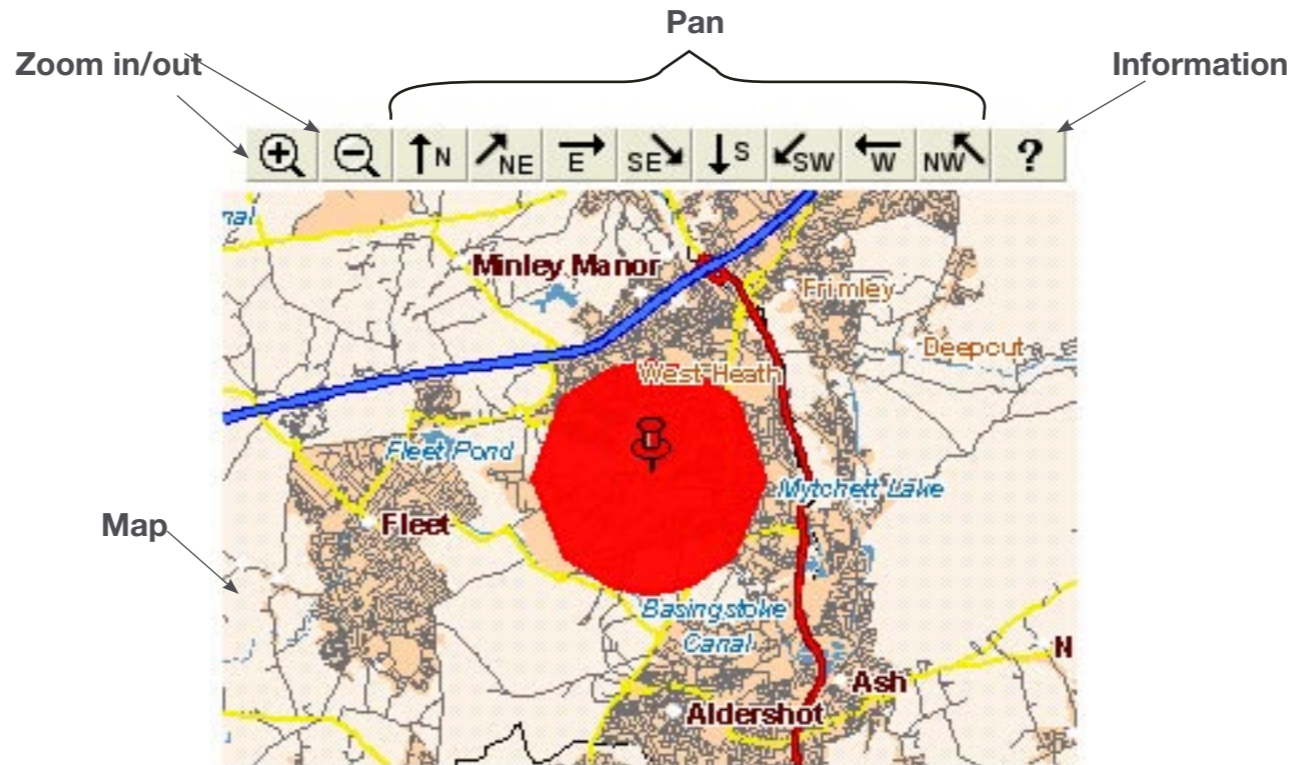
# 6.0 LOCATION-BASED SERVICES

Your Gizmondo™ device's built-in GPS unit makes possible a range of services not seen before on a device of this type. These are designed to help you find your way around town, or to locate nearby establishments and venues. Gizmondo™ device's location-based services comprise the following:

- Where Am I
- Find The Nearest™
- Tracking (Guardian only)

## 6.1 WHERE AM I (WAI)

The WAI application enables you to find yourself on a map via GPS. Your position – latitude and longitude – is then converted into map format, so you can easily see where you are. You'll also receive a time and date stamp, indicating when reading was made. You can pan and zoom around the map image for additional detail.



The device was found successfully at:  
**Wessex Road FARNBOROUGH GU14 6**  
 The last GPS reading for the device was at:  
**Fri Jan 14 11:50:08 GMT 2005**

Your location will be indicated by a red pin, as above.  
 Map coverage is for the entire UK.



## 6.0 LOCATION-BASED SERVICES

6.1.1 CONTROL BUTTONS FOR WAI		
Button	Action	Description
Accept/ Select	Tap	Actions highlighted icon
Decline/ Cancel	Tap	Previous screen
Shift & Accept	Hold SHIFT & Tap accept	Refreshes page
D-Pad	North/south	Scrolls page
Shift	Tap	Tabs between icons
SHIFT & Decline	Hold SHIFT & tap decline	Previous menu. Exit web services

### 6.2 FIND THE NEAREST

Various services are allocated categories, such as accommodation, ATM's, restaurants, bars, and so on. These are then called Points of Interest (POI). The Find The Nearest feature makes it possible for you to find these POIs using GPS navigation. When you select a chosen POI, the feature calculates your position and notifies you of the nearest POI.

### 6.3 TRACKING BY GUARDIAN

The Guardian is able to track and locate a Gizmondo™ device user should his or her Gizmondo™ device terminal be active. Tracking is done via a SMS message sent from the Guardian's mobile phone to the Server indicating which terminal is to be tracked. The resulting SMS notification will provide full address details to the Guardian.

You can make a request from a mobile phone by sending an SMS message to "60911". Your message content should read: "Giz track 'name of terminal'".

For example, if you've called your terminal Unit1, the Guardian will locate the terminal by texting the following message to "60911":

**Giz track unit1**

If the guardian is only registered to one terminal, then the message content will be as follows:

**Giz track**

Again, this will be text to number "60911".

**NOTE:** The operation of this feature is dependent on the Guardian registering his or her number against the terminal. This can only be done at the Gizmondo™ device website, ie [www.gizmondo.com](http://www.gizmondo.com). Please refer to section 3.4 of this document.

**NOTE:** The GPS facility is not active during standby mode.



## 7.0 EMERGENCY ALARM/DIRECT ALERT

When the Emergency Alarm is pressed and the function enabled, the unit sends its last known position – latitude and longitude – to our server. This information is converted to provide address details to the nominated Guardian, along with the reading’s time and date, and an SMS message with these details is sent to the Guardian’s mobile phone.

The Emergency Alarm is activated by pressing and holding down the ALARM piano key for 3 seconds. There is no icon advising the user if the terminal is in ‘alarm’ mode. The alarm will send three EMERGENCY SMS messages to the Guardian’s mobile staggered at 5-minute intervals. Canceling the alarm can be actioned through the protected settings (refer to section 5.9.2).

When activated a small ‘Please Wait’ icon is displayed at the top of the screen.



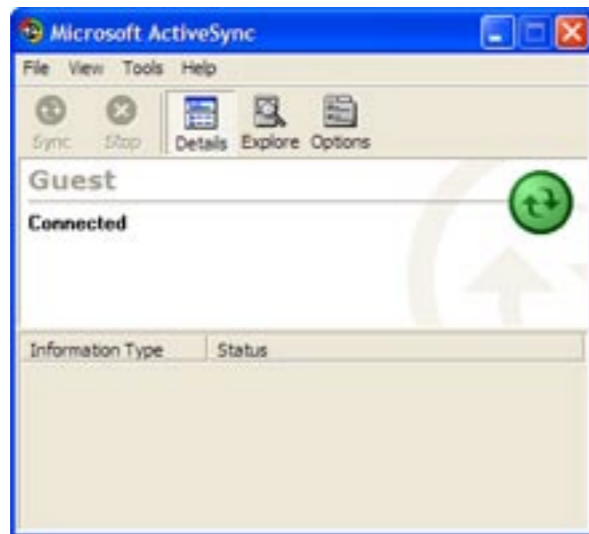
# 8.0 ACTIVESYNC

In order for you to administer files contained on your Gizmondo™ device via the host PC, an ActiveSync connection must be established. For the ActiveSync to function correctly two drivers need to be installed: wceusbsh.inf and wceusbsh.sys.

When connecting the Gizmondo™ device to the host PC, the ActiveSync icon will be displayed at the bottom right (Windows XP) of the your PC monitor's screen:



This is followed by the Microsoft ActiveSync pop-up box:

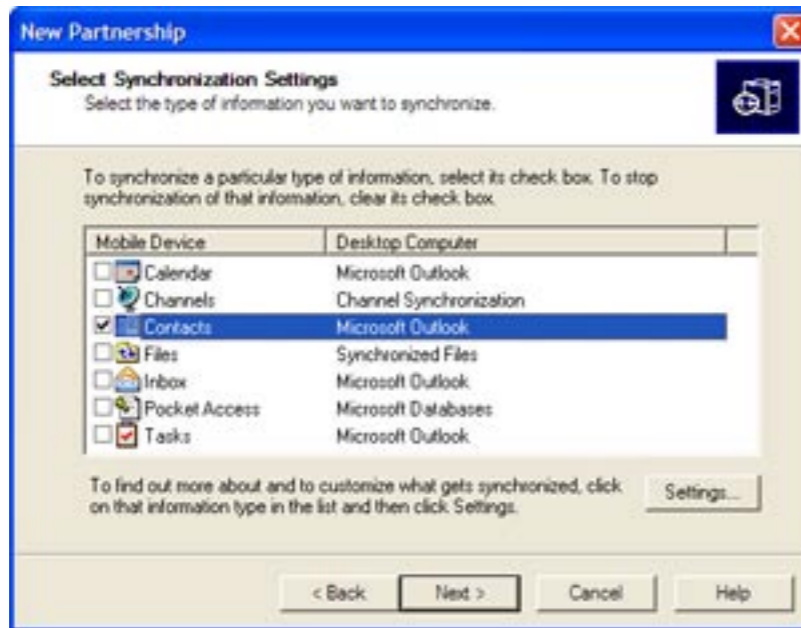


When a connection has been validated, the host screen will ask if you would like to set up a partnership. Please refer to section 11.

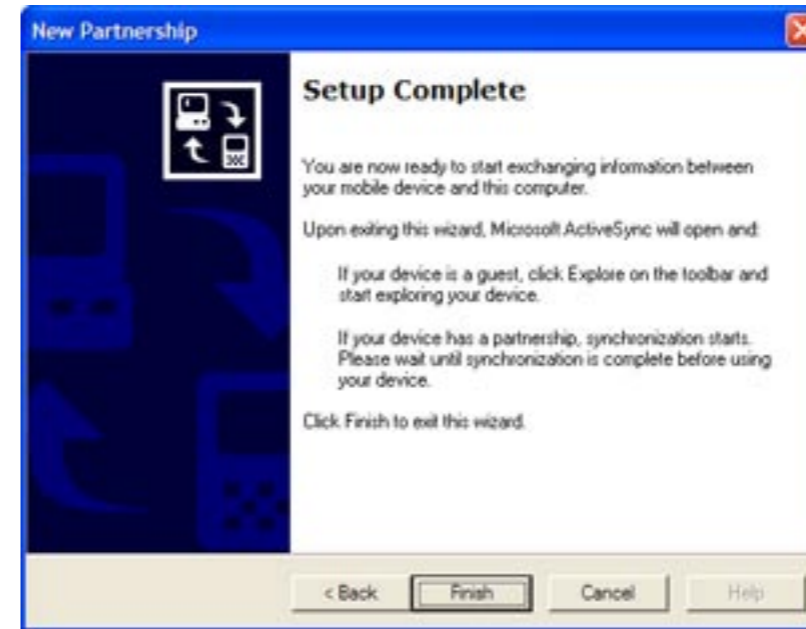


## 8.0 ACTIVESYNC

Clicking 'Yes' will enable automatic synchronization between the terminal and host PC. You should **ONLY** select a partnership with 'Contacts' and not any other mobile device functions listed:



After selecting 'Next', a setup complete message is displayed:



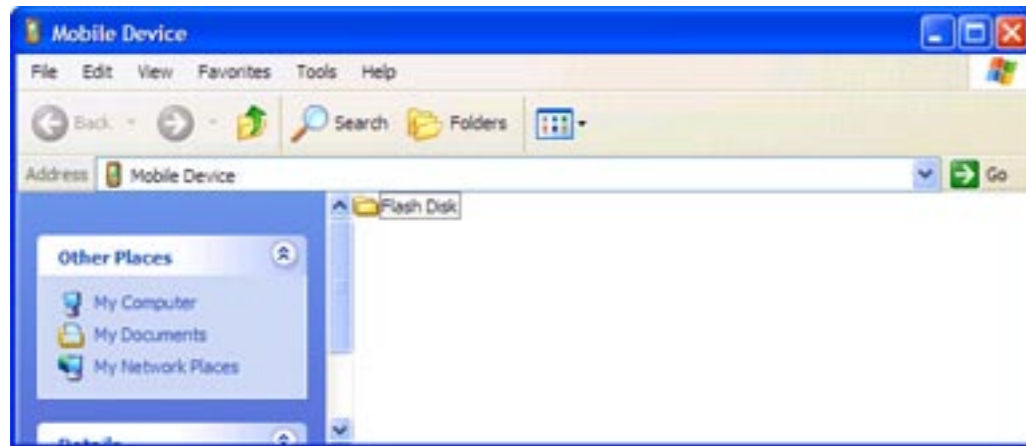
Click 'Finish' for synchronization to commence:





## 8.0 ACTIVESYNC

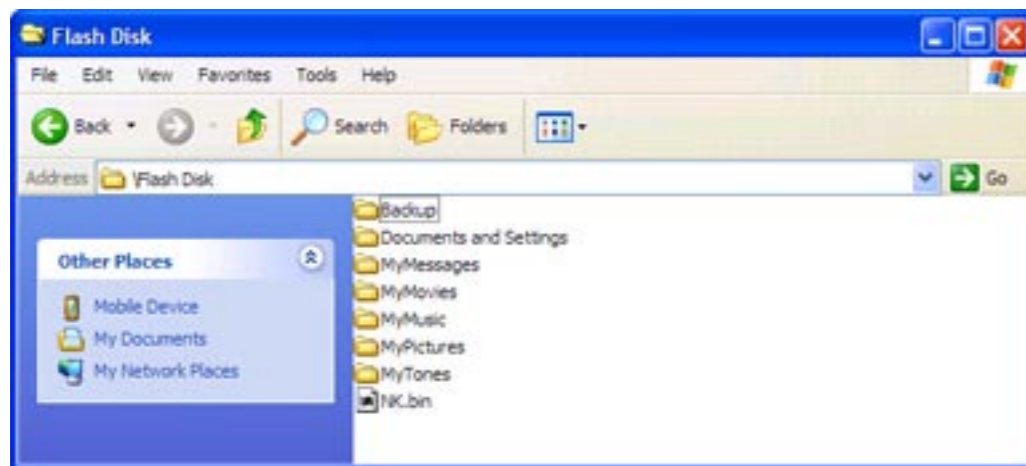
If you select 'No' at the 'Setting up a Partnership' stage, you'll be directed straight to the terminal folder directory:



To transfer files from the host PC to your Gizmondo™ device, you should simply conduct copy and paste into the appropriate folder and directory. If an SD Card is inserted into the device, it will also be displayed.

Full administration is performed via ActiveSync.

The Parent folder is your Gizmondo™ device's internal memory: 'Flash Disk'.



This contains all internal folders and displays where files are allocated. For example, movie files are stored in 'MyMovies', pictures are stored in 'MyPictures' and so forth.



# 9.0 UPDATING YOUR GIZMONDO™ DEVICE'S SOFTWARE

Updating your Gizmondo™ device's software, both the Operating System and Applications, is done using the Image Updater. There are two ways to update:

1. SD-Card
2. ActiveSync

Updating the unit will not remove any files from the internal memory, but you're **STRONGLY RECOMMENDED TO BACKUP IMPORTANT FILES** on your host PC first, such as your contacts or digital photo album, for example.

There are three types of Update Packages. They are:

1. Operating System – including all boot loaders, Factory Test and OS Kernel (8-10MB zipped)
2. Application – GTShell and all it's configuration files (13+MB zipped)
3. Operating System and Application – for SD card only

Every Update Package will have a unique Released Version Number. These are in the following format:-  
Major.Minor.Revision – 1.0.1.

The Update Application will not allow a previous version of software to be loaded onto your Gizmondo™ device. Files in the update package must have a version number greater than or equal to one currently loaded on the Gizmondo™ device.

## 9.1 SOFTWARE UPDATE VIA SD CARD

There are two steps to performing a software update via SD card.

They are:

1. **CONFIRM//CHECK** – confirms update with you, checks existing files and that your charger is connected
2. **CONFIRM COMPLETION** – informs you whether the software has been updated successfully

To perform a software update via SD Card, you should do the following:

1. Make sure your Gizmondo™ device is plugged into its charger. You'll need to ensure uninterrupted power to your unit for the duration of the process or else your Gizmondo™ device could be permanently damaged
2. Press Accept when prompted to run the application. Your Gizmondo™ device checks the validity of the package, gets all version numbers from the software running and the software being loaded (from configuration file) and displays them to screen. It will also prompt you to plug in your charger if you've not already done so. You'll also be prompted to backup your system using ActiveSync Backup
3. Confirm the update when asked
4. After the Gizmondo™ device has updated its software, you'll see displayed a success of failure notification.



## 9.0 UPDATING YOUR GIZMONDO™ DEVICE'S

### 9.2 SOFTWARE UPDATE VIA ACTIVESYNC

This is similar to an SD Card update, except your software with which to perform the update must be present on your PC. This will download the initial update section to the handheld. Then you'll have to use your Gizmondo™ device itself to continue the update. The PC software must be kept running until the update has completed.

To update your Gizmondo™ device's software via ActiveSync, you'll need to do the following:

1. Make sure all the files necessary for the software update are available on your PC, either on CD or on the PC's hard drive
2. Connect your Gizmondo™ device to your computer via USB
3. Make sure your Gizmondo™ device is plugged into the mains via the charger. Your Gizmondo™ device's power **MUST NOT** fail during the update process or you risk permanent damage!
4. Run Install.exe on your PC
5. PC install will then confirm that you wish to update the Gizmondo™ device software, and you'll be prompted to backup your files using ActiveSync Backup
6. The Update Application EXE will be copied automatically to your Gizmondo™ device, along with the new system
7. Your PC will then initiate the Update Application EXE on your Gizmondo™ device
8. Your Gizmondo™ device will again confirm that the right software is present, and check that your charger is plugged in. It will then ask you to confirm the update. You should choose 'Yes'.
9. Your Gizmondo™ device will then begin updating, taking files from your PC automatically. **DO NOT** disconnect either the power or USB cable, or turn off your PC while this is taking place. You'll receive confirmation of the process success or failure later
10. You'll receive a notification of the success or failure of the update



# 10.0 SYSTEM REQUIREMENTS

- Intel compatible 486 or higher computer that is compliant with USB 1.1 or higher
- Available USB port
- Windows 98, Windows ME, Windows 2000, or Windows XP
- Microsoft Outlook



# 11.0 TROUBLESHOOTING

## I CAN'T SWITCH MY GIZMONDO™ DEVICE ON

Charge it for at least 15 minutes before switching it back on again. Make sure the battery icon is scrolling up and down. If not, plug the charge out and plug it in again, making sure your wall socket is on. If repeated plugging in and out do not help, Reset your Gizmondo™ device by holding down the Menu/Home keys together for 10 seconds. If this fails, contact the Gizmondo™ device help desk at 0800 731 1278.

## I GET A MESSAGE SAYING BATTERY STATUS UNKNOWN

Your battery may be placed incorrectly. Please check that it is installed properly, with metal contacts on the battery and Gizmondo™ device lining up with each other.

## MY GIZMONDO™ DEVICE SWITCHED ITSELF OFF

Your battery may be low or run out of power completely. Plug it into the mains via your charger for at 15 minutes to 3 hours.

## I GOT A MESSAGE SAYING MY PIN IS INCORRECT

Check that you're entering the PIN code correctly. Be careful if you enter the wrong one three times, your card will be blocked, in which case you'll need to contact your network service provider.

## HOW DO I CLEAN MY GIZMONDO™ DEVICE?

Use a dry cloth, or a screen cleansing wipe.

## I CAN'T HEAR ANYTHING FROM MY MUSIC PLAYER

Make sure your mute button is off, that your console is not on pause, your Gizmondo™ device's volume is turned up, and that your headphones are inserted correctly into the appropriate jack. Also, remember that you can't use your Gizmondo™ device's music and video

players together at the same time. If all else fails, reset your Gizmondo™ device as outlined in point xxx of the User's Guide. Don't forget that you'll need to back up all information stored on your console first.

## I CAN'T HEAR ANYTHING FROM MY VIDEO PLAYER

Make sure your mute button is off, your Gizmondo™ device's volume is turned up and that your headphones are inserted correctly into the appropriate jack. Remember, you can't use your Gizmondo™ device's video and music players together at the same time. If all else fails, reset your Gizmondo™ device as outlined in point xxx of the User's Guide. Don't forget to back up everything stored on your Gizmondo™ device first.

## MY VIDEO IS JERKY OR DOESN'T PLAY AT ALL

Make sure the file you're trying to watch is in WMV or MPEG4 format. If not, you'll need to convert your clips into one of the formats listed above. There are a variety of applications available online that will enable you to do so.

## MY GIZMONDO™ DEVICE SUDDENLY TURNED OFF

Make sure your battery is fully charged. Plug in your Gizmondo™ device into the mains using the charger supplied. Charge your battery to full capacity, which takes about three hours.

## MY PHOTOS SEEM DARK OR GRAINY

You may be taking pictures in low light, or you may have moved while taking the picture. Check your camera by taking pictures in brightly lit areas.



## 11.0 TROUBLESHOOTING

### WHY DO I NEED TO WORRY ABOUT FLIGHT MODE?

Flight mode turns your Gizmondo™ device's GSM/GPRS modem off. Your Gizmondo™ device's GSM/GPRS modem can affect sensitive electronic equipment found onboard aircraft or in hospitals, for examples. By switching to Flight Mode, you'll still be able to enjoy your Gizmondo™ device when you're in mobile phone-free zones.

### I CAN'T CONNECT MY GIZMONDO™ DEVICE TO MY MOBILE PHONE OR PDA VIA BLUETOOTH™

Gizmondo™ device's Bluetooth™ currently only supports file transfers between other Gizmondo™ device units.

### I CAN'T SAVE ANYTHING FILES TO MY SD CARD

You may not have sufficient memory on your SD card. Check your remaining memory by selecting Settings in your Gizmondo™ device's main Menu. Then select Device Info. You'll see reading of how much memory is left in your inserted SD Card, under the heading SD Disk Free (KB). A reading of zero means you're out of memory and you should try a different card.

### I CAN'T SAVE ANYTHING ON MY GIZMONDO™ DEVICE'S INTERNAL MEMORY

You may have insufficient memory on your Gizmondo™ device's internal memory. Check your remaining memory by selecting Settings in your Gizmondo™ device's main Menu. Then select Device Info. You'll see reading of how much memory is left in your Gizmondo™ device's internal memory under the heading GT Disk Free (KB) A reading of zero means you're out of memory and you'll need to transfer items to an SD card or your PC.

### I INSERTED AN SD CARD INTO MY GIZMONDO™ DEVICE AND NOTHING HAPPENED

This may happen if your SD card is blank. Go to Settings in your Gizmondo™ device's main Menu. Go to the Device Info section, and check the SD Disk Free (KB) header. If there's a figure there other than zero, your Gizmondo™ device has recognised your SD Card.

### NOTHING HAPPENS WHEN I PLUG MY GIZMONDO™ DEVICE INTO MY PC

Make sure your USB drivers and ActiveSync software are installed. In order to work correctly, you need to have installed the software on your PC BEFORE you first plugged in your Gizmondo™ device. If this was not the case, you may need to uninstall the Gizmondo™ device software on your PC using its Add/Remove Control Panel. Reinstall the software and then plug in your Gizmondo™ device. The USB drivers you'll need to remove are wceusbsh.inf and wceusbsh.sys.

### WHEN I PLUG MY GIZMONDO™ DEVICE INTO MY PC, I GET A MESSAGE SAYING USB DEVICE NOT RECOGNISED

When you plugged your Gizmondo™ device in, it may not have been fully booted up. Unplug your Gizmondo™ device, allow it to boot up fully, and plug it in again. If the message persists, unplug your Gizmondo™ device, reboot your PC, and plug in your Gizmondo™ device, making sure it's fully booted up.



## 11.0 TROUBLESHOOTING

### I CAN'T SEND AN SMS MESSAGE

Make sure you have enough credit left on your contract-free SIM. Top up as necessary. Please note, you should use the SIM card that came in your Gizmondo™ device pack as we cannot guarantee that GIZMDONDO's messaging will work with any other. If you're in credit and you still can't send a message, make sure you have adequate coverage via GSM/GPRS. Make sure you're not in Flight Mode.

### I CAN'T SEND MULTIMEDIA VIA MMS

Presently, Gizmondo™ device only supports picture messaging via MMS, so you won't be able to send music or video files. Check [www.gizmondo.com](http://www.gizmondo.com) for software updates, which may feature such functionality in future.

### I CAN'T ESTABLISH A GPS FIX

Go outdoors or somewhere where you can see open sky. Go to the GPS & Web Settings in your Gizmondo™ device's main Menu. Go to the GPS Coverage Data setting. Check whether you get any numbers other than zero in any of the data boxes. Click on the Advanced tab below the table. You'll see a list of satellites available to your Gizmondo™ device. You'll need a reading of 30 or more in three columns to be able to establish a satellite fix. Change your position until you can establish such a reading, at which time the satellite icon in the top right of this window will turn green. Be aware that buildings can sometimes interfere with GPS signals.

### I CAN'T SET A GEOFENCE

Make sure you have a GPS fix; if not take steps as outlined above. In your GPS Coverage Data Menu, make sure the Margin of Error reading is 100m or less if you do have satellite coverage. Note that GPS signals tend to get stronger over time, so if you wait a little, your Margin of Error reading may decrease

### I CAN'T USE MY TRACKING BY SMS/THE WEB FEATURES

Make sure your account is in credit. You can check your account in the MyGiz section of the Gizmondo™ device.com website. Make sure you can establish a GPS fix as outlined above.

### I CAN'T LOG INTO WEB SERVICES

Make sure you have GPRS coverage



# 12.0 APPENDIX A

## Screenshots: Updating Gizmondo™ device software with Image Updater





# 13.0 APPENDIX B

## Gizmondo™ device TECHNICAL SPECIFICATIONS IN DETAIL

### 13.1 OPERATIONAL TEMPERATURE RANGE

Normal conditions:

Temperature +15°C - +35°C

Humidity 25% - 75%

Extreme:

Temperature 0°C - +55°C

NOTE: battery charging will only occur between 0°C and +40°C

### 13.2 PHYSICAL DIMENSIONS

#### 13.2.1 SIZE

138 x 82 x 32mm

#### 13.2.2 WEIGHT

The terminal weight is 155 grams (181 grams with the battery).

#### 13.2.3 AUDIO SOCKET

3.5mm 3 pole audio jack

#### 13.2.4 SD CARD

The Gizmondo™ device unit incorporates a SD card connector of the push/push type. The connector is a Yamaichi type 35x24x3mm connector body with card inserted. The connector has an integrated latching mechanism allowing the card to be depressed into the terminal by 1mm.

### 13.3 DC CONNECTOR

A co-axial DC connector is required for charging the device.

### 13.4 GSM

The GSM subsystem is a tri-band 900, 1800 and 1900MHz. The module has been pre-tested to GCF, CE and FCC standards. The module will be utilized to send and receive SMS, MMS as well as for GPRS data transfers.

### 13.5 GPRS

The GPRS data solution is a type B, class 10.

### 13.6 SIM

1 x 3V SIM card is required.

### 13.7 REAL-TIME CLOCK (RTC)

The terminal contains a RTC which tracks the current date and time even when the GPS information is not available. The RTC date and time are adjusted automatically using the GPS clock information when it is available. Automatic daylight saving time adjustment is provided, based on the current time zone setting.

### 13.8 OPTICS AND CAMERA

The terminal has an integrated CMOS camera module.

Effective pixels: 640 x 480 (VGA)

Focus range: 30 cm – infinity

Viewing angle: Approximately 54 degrees

Rear mounted CMOS VGA sensor used to capture still images.

The camera supports JPEG image capture and storage, and a continuous viewfinder image capture at a low frame rate.

### 13.9 SUPPORTED AUDIO FORMATS

The playback of MP3, MIDI (including sampled sounds and polyphonic tone generation (SP-MIDI)) WMA or WAV audio from stored content is supported in the following modes:

- Terminal speaker in mono
- Wired headset in stereo



## 13.0 APPENDIX B

### 13.10 SUPPORTED VIDEO FORMATS

The playback of MPEG4/WMV video is supported.

### 13.11 POLYPHONIC SOUNDS

Supports the playback of MIDI and SP-MIDI sounds.

### 13.12 SPEAKER

A 16mm speaker, producing at 1 kHz typically 92 dB SPL at 10 cm with 0.3W drive is used. Incoming calls or alarm events are signaled by playing polyphonic ring tones, stored media or MP3 files.

### 13.13 STEREO HEADPHONES

One connector 3.5 mm 3 pole (Left/Right shield). Headset impedance down to 32 ohms.

### 13.14 MEMORY

The Gizmondo™ device terminal contains a non-volatile memory (Disk on Chip) and SDRAM.

### 13.15 DISPLAY

Integrated TFT LCD and back lighting module. Specification is as follows:

Active area	2.8-inch diagonal
Pixels	320xRGBx240
Colour depth	16-bit
Viewing angle	Perpendicular in landscape orientation The backlight automatically switches itself off after 15 seconds without any keyboard activity. As soon as you press a button or receive an SMS or MMS message, the backlight switches on automatically.

### 13.16 VIBRATE MODE

For gaming applications or announcing messages, a small vibrate unit has been fitted:

4mm diameter motor with a weight of approximately 1 gram.

### 13.17 POWER SUPPLY

The terminal operates from a custom battery pack containing a single Li-Ion cell. The specification is as follows:

- 1100mAh
- 3.7V nominal
- End of battery life 3.3V
- 4.25V max
- Weight approximately 30 grams

### 13.18 DC CONNECTOR

External wall cube charger, 5.3V with a current limit of 600mA. Charging time for the Gizmondo™ device terminal is approximately 3.5 hours (based on a nominal charging current of approximately 550 mA).

### 13.19 USB

Upon connecting your Gizmondo™ device terminal to a USB host (PC), the host automatically identifies the communications and the data storage. The following services will be available via the USB interface:

- Uploading, downloading, and manipulation of multimedia content in the terminal
- Synchronization between a PC and the terminal, manipulation of games, MP3, MPEG4, contacts.



## 13.0 APPENDIX B

### 13.20 GPS SPECIFICATION

The GPS module is supplied by SiRF. Details as follows:

<b>13.20.1</b>	<b>Position Accuracy</b>	
	Autonomous	<10m
	WAAS	<5m
	Beacon DGPS	<2.5m
<b>13.20.2</b>	<b>Receiver</b>	
	Tracking Channels	L1, CA code 12
	Max. Update Rate	10Hz
	Sensitivity	-172dBW
	Max. Altitude	<60,000ft
	Max. Velocity	<1,000 knots
	Protocol Support	NMEA, SiRF Binary
<b>13.20.3</b>	<b>Acquisition</b>	
	Reacquisition Time	100msec
	Snap Start	<3sec
	Hot Start	<8sec
	Warm Start	<38sec
	Cold Start	<45sec

### 13.21 OPERATING SYSTEM

Gizmondo™ device's operating system platform is Microsoft Windows CE.NET (version 4.2). This encompasses the operating system kernel and some platform infrastructure, e.g. TCP/IP protocol stack.



# 14. HELPLINE

If you have any further questions about how to use your Gizmondo™ device, about the Smart Adds' program, or forthcoming releases, please call our helpline on 0800 731 1278.



PAGE 60



PAGE 60

