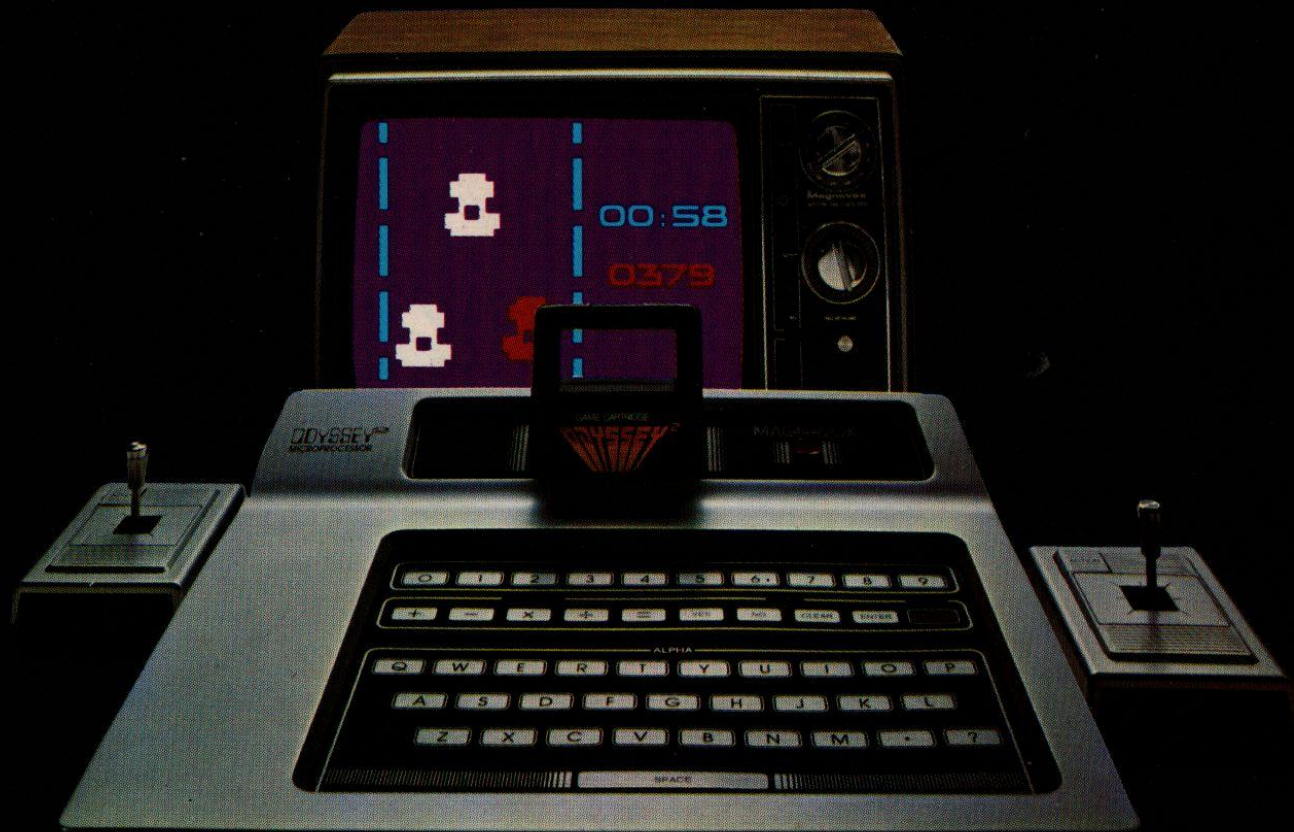


OWNER'S MANUAL

QWERTY 2





©1980 Magnavox Consumer Electronics Company
Odyssey is a Trademark of The Magnavox Company

CONGRATULATIONS!
CONGRATULATIONS!
CONGRATULATIONS!
CONGRATULATIONS!

You have just acquired the ultimate video game system!

Your Odyssey² is even more sophisticated than most arcade games. It employs state-of-the-art electronic technology which was unthinkable only a few years ago.

It uses a tiny microprocessor, which is a miniature computer, to perform complex electronic functions formerly accomplished only by far more bulky and expensive equipment.

Your Odyssey² has been engineered to give you many years of fun and entertainment. It is quite simple to set up and operate, but it is very important that you read and understand the information contained in this manual first.

YOUR ODYSSEY² CONSISTS OF:

- 1 COMPUTERIZED CONSOLE UNIT
- 2 HAND CONTROLS
- 1 TV ANTENNA CONNECTOR
- 1 AC ADAPTOR CORD
- 1 GAME CARTRIDGE
- 1 GAME CORD

First Install the Antenna Connector

Your Odyssey² will interconnect with any color or black and white television set. All you need is a flat-head screwdriver.

If you have a VHF antenna utilizing flat twin-lead wire, simply disconnect it from the VHF terminals on the rear of your television set.

Reconnect this wire to the terminals on the TV ANTENNA CONNECTOR.

Now connect the flat twin-lead wire from the TV ANTENNA CONNECTOR to the VHF terminals on the back of your television set.

If your VHF antenna cable is round with a screw-type connector (75 ohm), you will need to purchase a 75 ohm to 300 ohm Balun to permit connection of your TV antenna to the Odyssey² Antenna-Game Switch. The 75 ohm to 300 ohm Balun's are available from your local Magnavox Dealer or any television service organization.

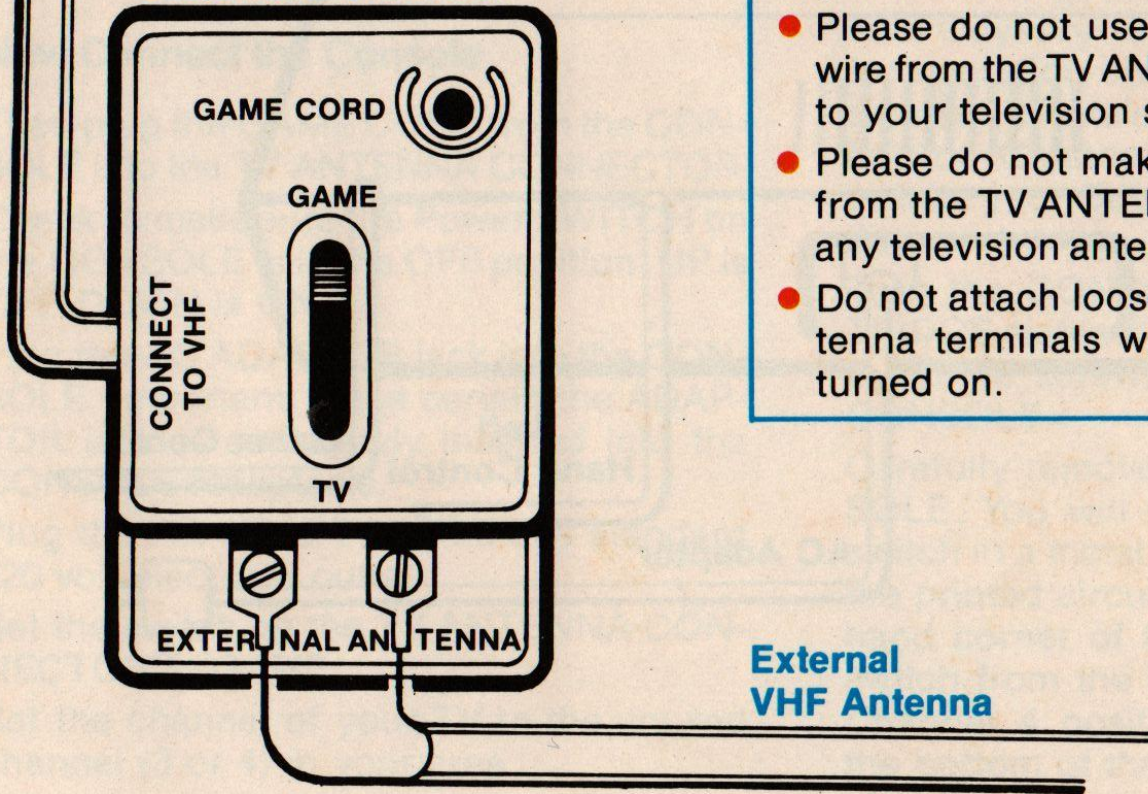
If you are using a 75 ohm round cable, your television will probably have a set of jumper plates or a switch which must be moved to select the VHF-300 ohm terminals. Your television instruction manual will be of help.

Note: If you have only a UHF antenna, do not disconnect it from your television set. Just connect the flat twin-lead wire from the TV ANTENNA CONNECTOR to the VHF terminals on the back of your television set.

Use the MOUNTING HOOK supplied to hang the TV ANTENNA CONNECTOR from the back of your television set. First insert the hook in the back of the connector; then insert the end through one of the ventilating holes on the back of your TV.

Connect to
VHF Terminals
on TV set

Antenna Connector

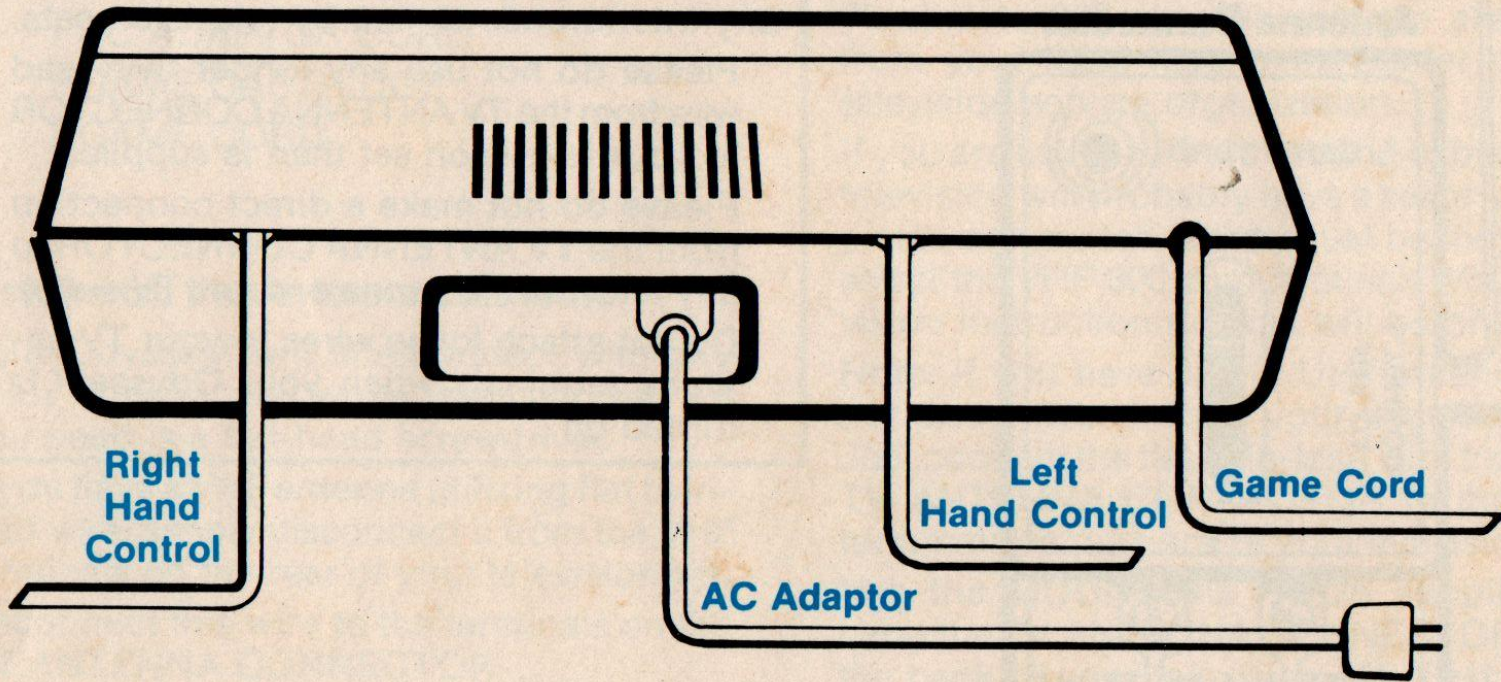


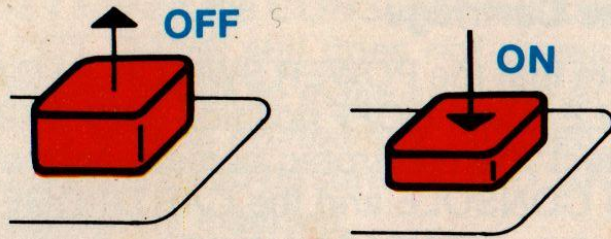
IMPORTANT! It is against Federal Communications Commission regulations to cause any interference to nearby television sets.

- Please do not use any longer twin-lead wire from the TV ANTENNA CONNECTOR to your television set than is supplied.
- Please do not make a direct connection from the TV ANTENNA CONNECTOR to any television antenna or cable TV outlet.
- Do not attach loose wires to your TV antenna terminals when your Odyssey² is turned on.

External
VHF Antenna

Rear of Console





Now Connect the Console

Then plug the GAME CORD from the CONSOLE into the TV ANTENNA CONNECTOR. Check to make sure the Power SWITCH on the CONSOLE is in the OFF position. UP is OFF. DOWN is ON.

Plug the AC ADAPTOR jack into the CONSOLE. Important: Make certain the ADAPTOR jack is completely inserted into the CONSOLE receptacle.

Plug the AC ADAPTOR into any standard 120 volt electrical outlet.

Set the switch on the TV ANTENNA CONNECTOR to GAME.

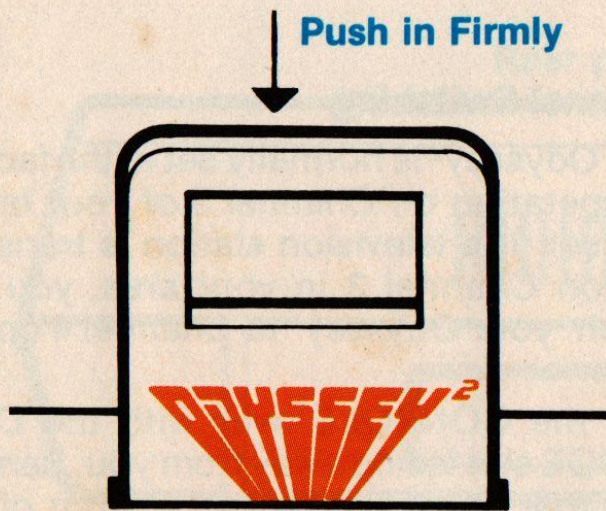
Set the channel of your TV to the unused channel (3 or 4) in your area.

Channel Switching

Your Odyssey² is normally set at the factory for operation on Channel 3 of your television set. If a television station is transmitting on Channel 3 in your area, you can switch your Odyssey² to Channel 4 operation.

Turn the CONSOLE over with the CARTRIDGE slot facing away from you. Remove the three screws from the bottom of the CONSOLE.

Carefully remove the bottom of the CONSOLE. You will find the channel selector switch in a metal box located to the right of the printed circuit board at the upper right hand corner of the CONSOLE. Move the switch from the Channel 3 position to the Channel 4 position—then gently replace the bottom of the CONSOLE.



Insert the Cartridge

Make sure that the POWER SWITCH on the CONSOLE is in the OFF position (UP). This will protect the electronic components of both the CONSOLE and the CARTRIDGE. Hold the Odyssey² CARTRIDGE so that the label side is facing you and reads right side up.

Insert the CARTRIDGE carefully in the cartridge slot on the top of the CONSOLE. Push it in firmly.

When you remove the CARTRIDGE, always make sure that the POWER SWITCH on the CONSOLE is in the OFF position.

TO PLAY

Be sure your TV is set to the unused channel (3 or 4) in your area.

Press the POWER SWITCH on the CONSOLE to the ON position (DOWN).

SELECT GAME will appear on your TV screen. If it should not appear, press the RE-

SET key on the CONSOLE keyboard. If SELECT GAME still does not appear on the screen, check to make sure the AC ADAPTOR jack is *completely* plugged into the CONSOLE and be sure that the CARTRIDGE is properly inserted.

The sounds of the game will be coming from the speaker on your television set. Adjust your TV volume control to a comfortable level.

Adjust the fine tuning control of your television set to get the best possible picture.

See the OFFICIAL GAME RULES booklet that accompanies each CARTRIDGE for specific game instructions.

WHEN YOU WANT TO RETURN TO REGULAR TV PROGRAMMING, push the POWER SWITCH of the CONSOLE to the OFF position (UP).

Set the switch on the TV ANTENNA CONNECTOR to TV.

Safeguards

Do not remove or insert CARTRIDGES unless the CONSOLE is turned off!

Guide the CARTRIDGES into the cartridge slot of the CONSOLE. Don't use force.

Clean exterior parts of the CONSOLE and CARTRIDGES with a soft, slightly damp cloth. Don't immerse them in water or spill liquids on them.

Keep the CONSOLE, CARTRIDGES and HAND CONTROLS away from extreme heat.

Avoid puncturing the keyboard. (Do not use pencils, penpoints or other sharp objects to press keys.)

Always turn the POWER SWITCH of the CONSOLE off when not in use.

Only connect the CONSOLE to standard AC electrical outlets.

IMPORTANT: Turn off your Odyssey² each time you have finished playing the games. Then unplug the AC ADAPTOR from the 120 v. outlet. Note: If you leave the same

game pattern on your TV screen for more than 6-8 hours continuously, there is a possibility that the game pattern could be permanently imprinted on the picture tube screen.

Trouble Shooting

No game image on TV.

Be sure TV ANTENNA CONNECTOR is set at GAME.

Check to see that GAME CORD is plugged into the TV ANTENNA CONNECTOR.

Check the connections of the TV ANTENNA CONNECTOR to the VHF terminals in back of your TV.

The CARTRIDGE may have been inserted when the CONSOLE was turned on. Push the POWER SWITCH to OFF and then push to ON.

Interference may be caused by a particularly strong broadcast or cable TV station in your area. Disconnect the antenna or cable wire from the TV ANTENNA CONNECTOR.

No TV program reception.

Check to be sure the TV ANTENNA CONNECTOR is set at TV.

Check antenna connections to TV ANTENNA CONNECTOR.

Game image weak or blurry.

Check for poor connections at antenna terminals of TV set and TV ANTENNA CONNECTOR.

Be sure fine tuning control of TV is properly adjusted.

Interference may be caused by a particularly strong broadcast of cable station in your vicinity. Disconnect the antenna or cable wire from the TV ANTENNA CONNECTOR.

No game sounds.

TV set volume should be turned up.

Right or left side of game area does not appear on screen.

Adjust the horizontal hold of your television set.



IB3587-1 7600

MAGNAVOX
MAGNAVOX
MAGNAVOX
MAGNAVOX
MAGNAVOX
MAGNAVOX

QUALITY IN EVERY DETAIL